

Yukon River 2010 Fall Season Projection and Alaska Outlook



**JTC Presentation to the U.S./Canada Panel
March 29 – April 2, 2010
Anchorage, Alaska**

Presented by: Bonnie Borba, ADF&G

Yukon River Fall Salmon Fisheries

- Drainage-wide Fall Chum Stock Status
- 2010 Fall Chum Run Size Projection
- 2010 Fall Season Outlook for Alaska



Fall Chum Salmon Stock Status Summary

Odd/Even year cycle disrupted in mid-90's

- ❑ Strong parent year escapements produced poor returns in 1998 through 2002.
- ❑ Poor parent year escapements produced strong returns from 2003 to 2008.

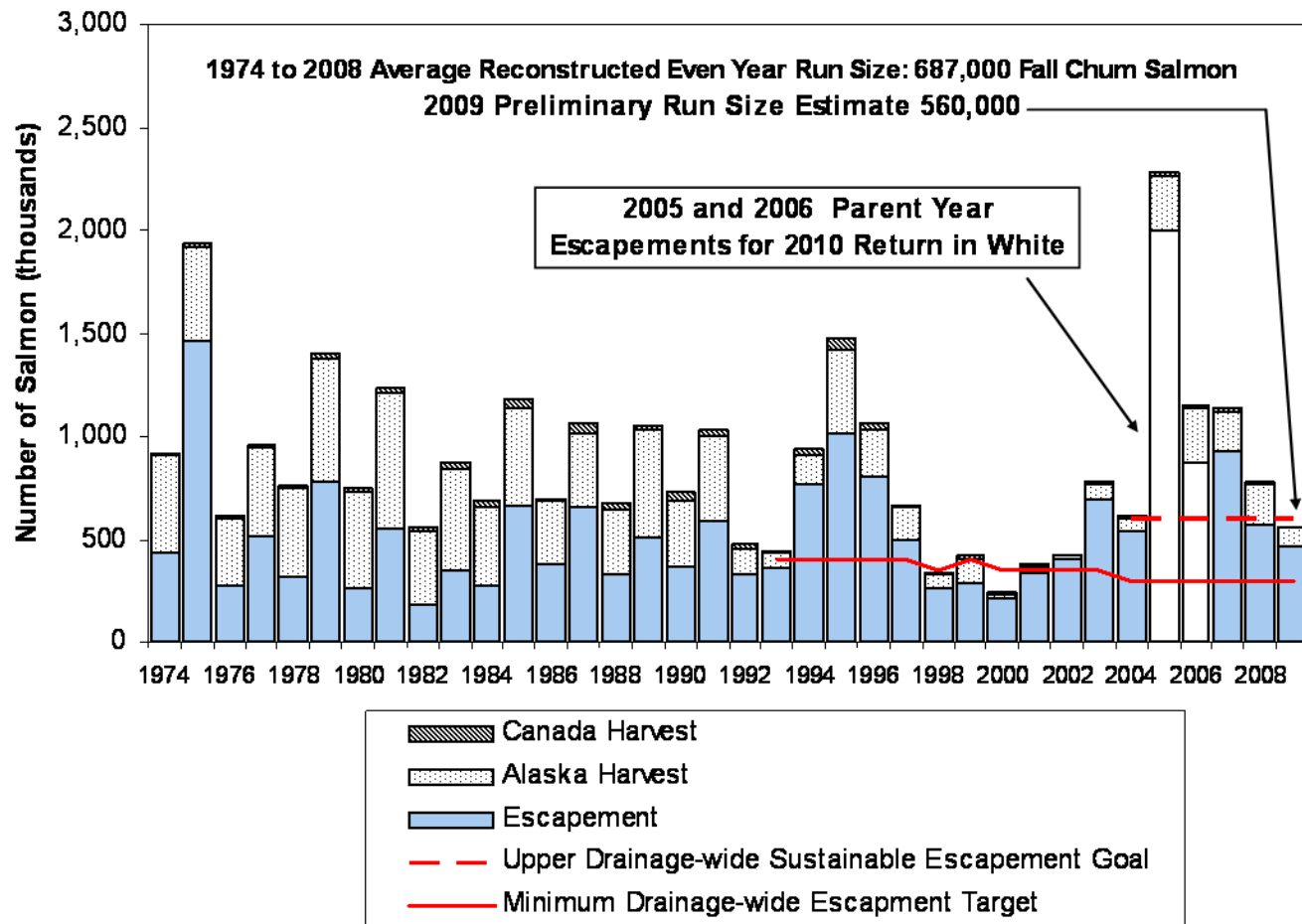
“Yield Concern” 2004-2007

- ❑ Commercial harvests have occurred in Alaska since 2003.
- ❑ Alaska subsistence opportunity was liberalized 2004-2008.
- ❑ Drainage-wide escapement goal achieved each year since 2001 with most tributary goals consistently achieved.

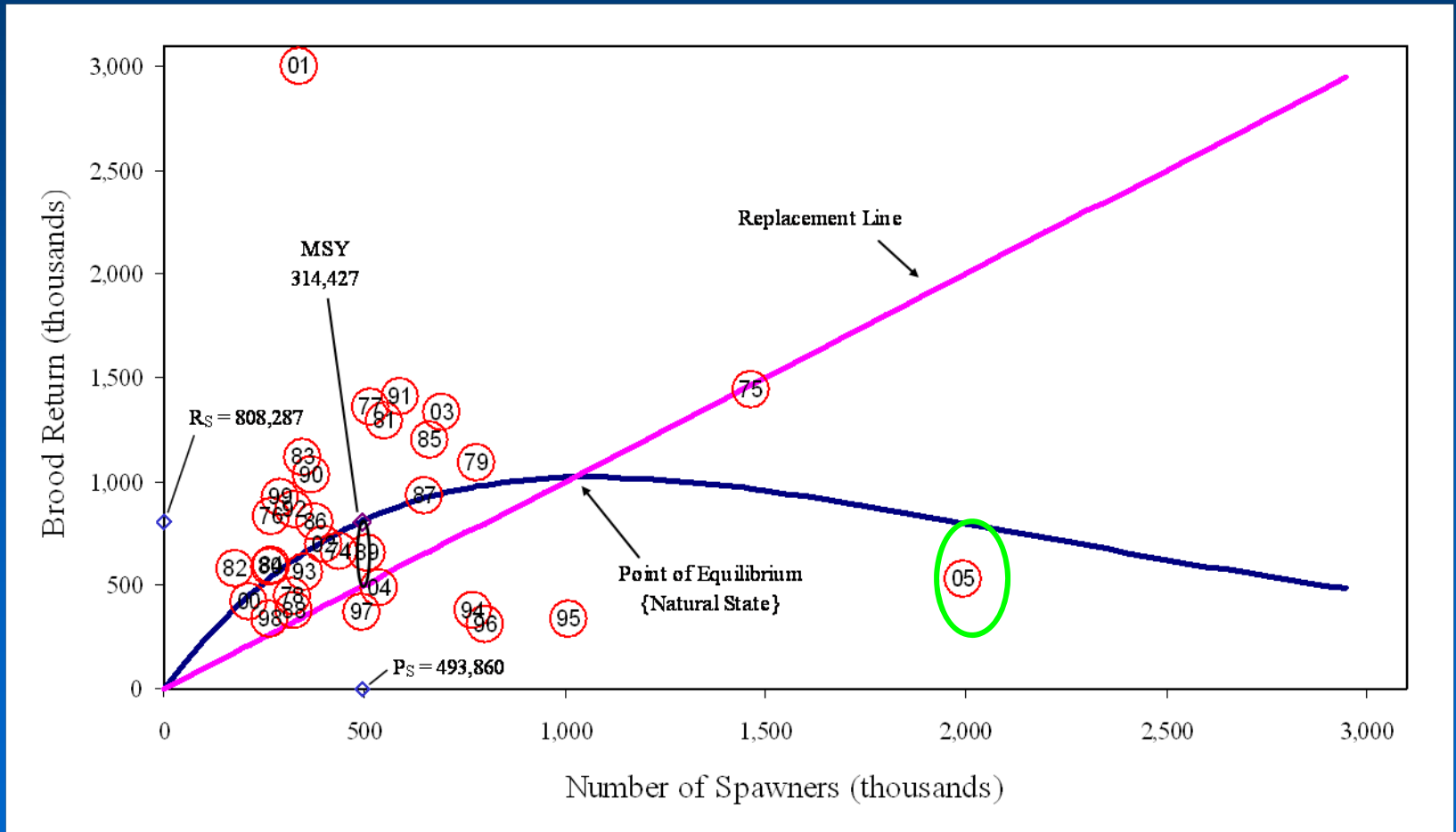
Current production rate difficult to predict.

- ❑ Brood year 2005 produced poorly. 2006 unknown!

Yukon River Fall Chum Salmon Reconstructed Total Run Size



Yukon River Fall Chum Salmon Ricker Curve



2010 Fall Chum Projection



➤ Run size will be made up of primarily age-4 and age-5 fish.

• **Age-5** component will contribute approximately 144,000 fall chum salmon based production observed from last years age-4.

Age-4 component is estimated to contribute approximately 521,000.

2010 Fall Chum Salmon Preseason Projection

Run Size 552,000 to 828,000

Point Estimate = 690,000

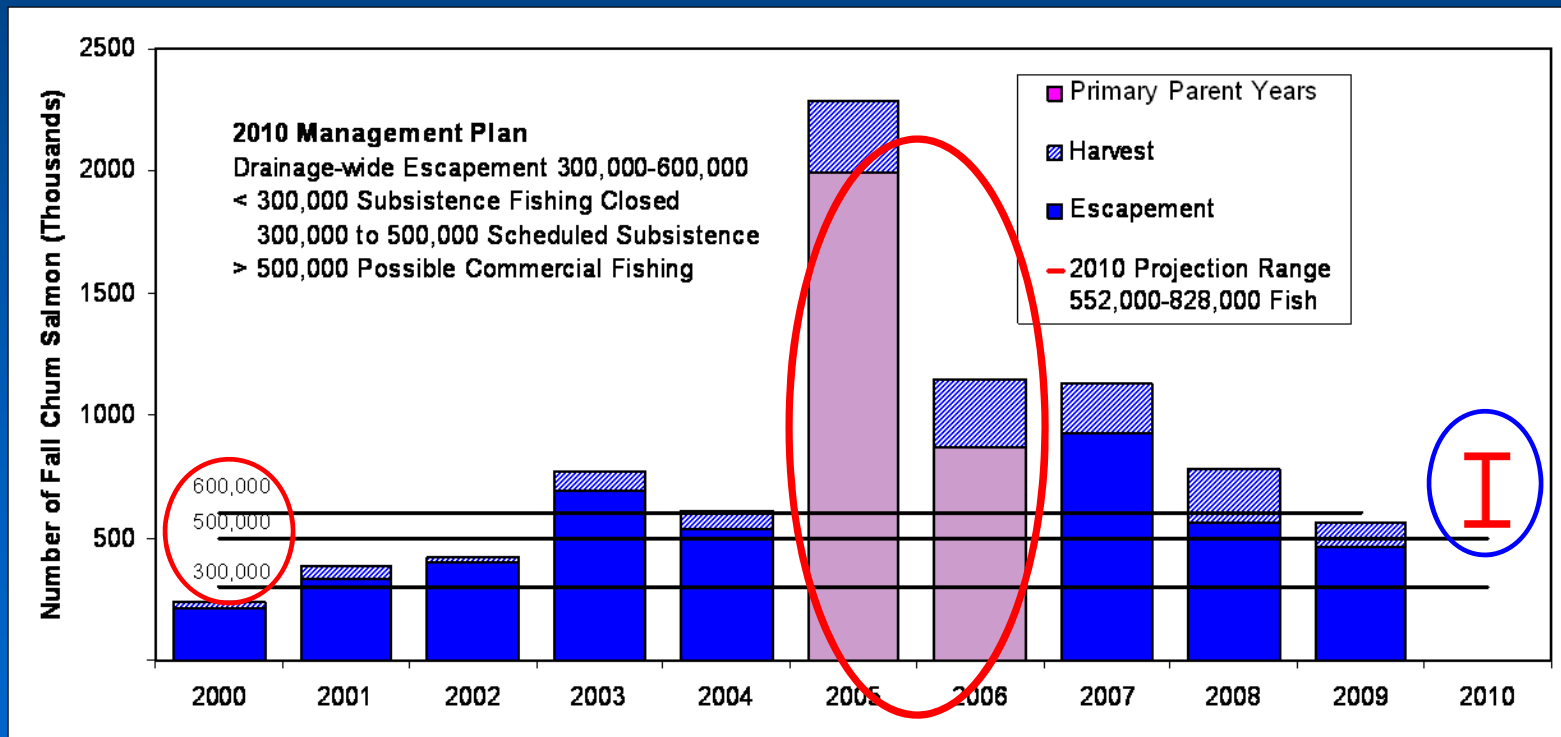
- Based on expectation of weak age-5 component from 2005.
- Uncertainty of age-4 returning from a large escapement in 2006.

Yukon River Drainage Fall Chum Salmon Management Plan

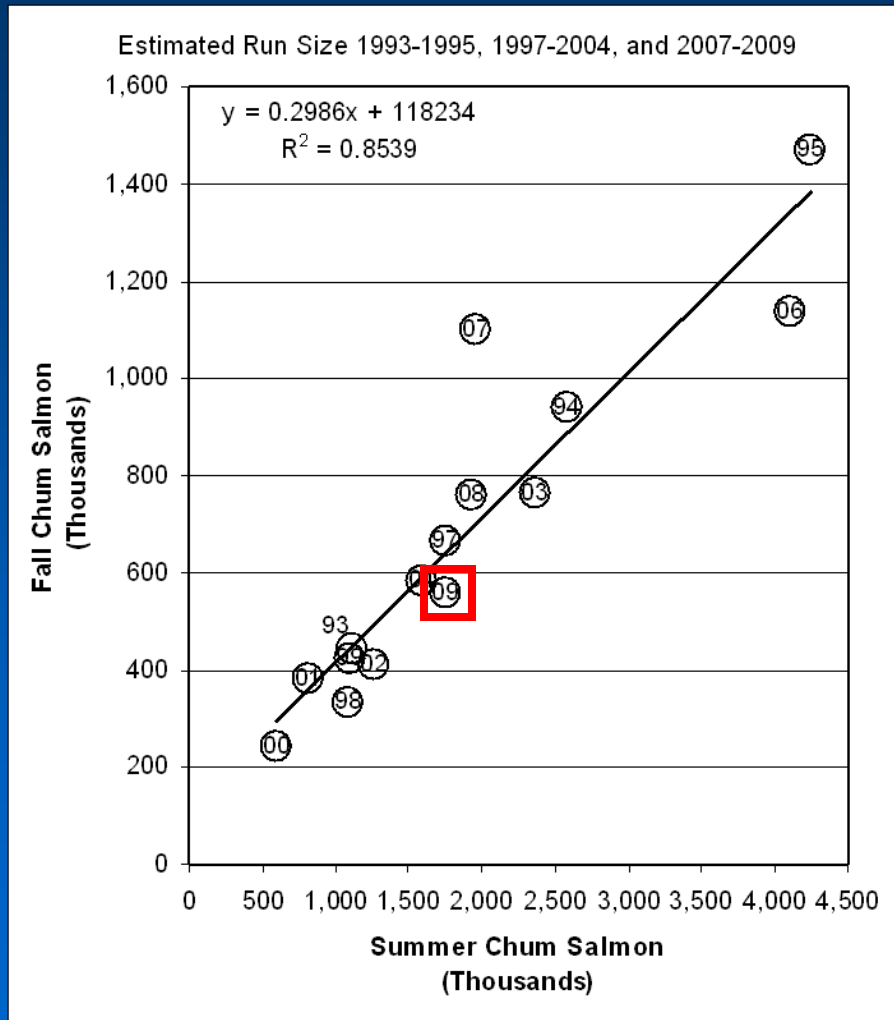
Run Size Estimate ^b (Point Estimate)	Recommended Management Action ^a Fall Chum Salmon Directed Fisheries				Targeted Drainagewide Escapement
	Commercial	Personal Use	Sport	Subsistence	
300,000 or Less	Closure	Closure	Closure	Closure ^c	300,000
300,001 to 500,000	Closure	Closure ^c	Closure ^c	Possible Restrictions ^{c, d}	to
Greater Than 500,001	Open ^e	Open	Open	Pre-2001 Fishing Schedules	600,000

Yukon River Drainage Fall Chum Salmon Management Plan

Total Run Size and Escapement

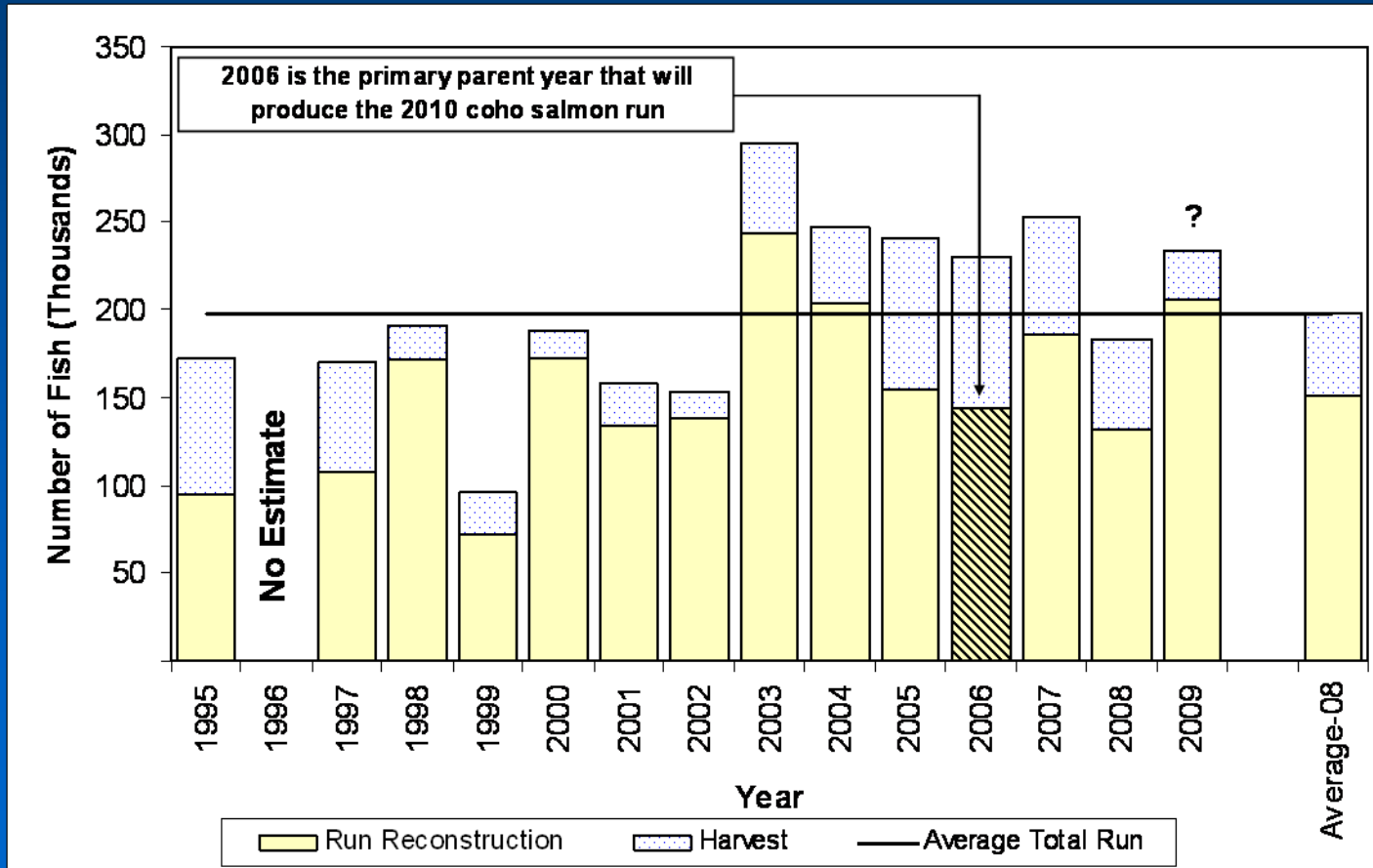


2010 Inseason Management

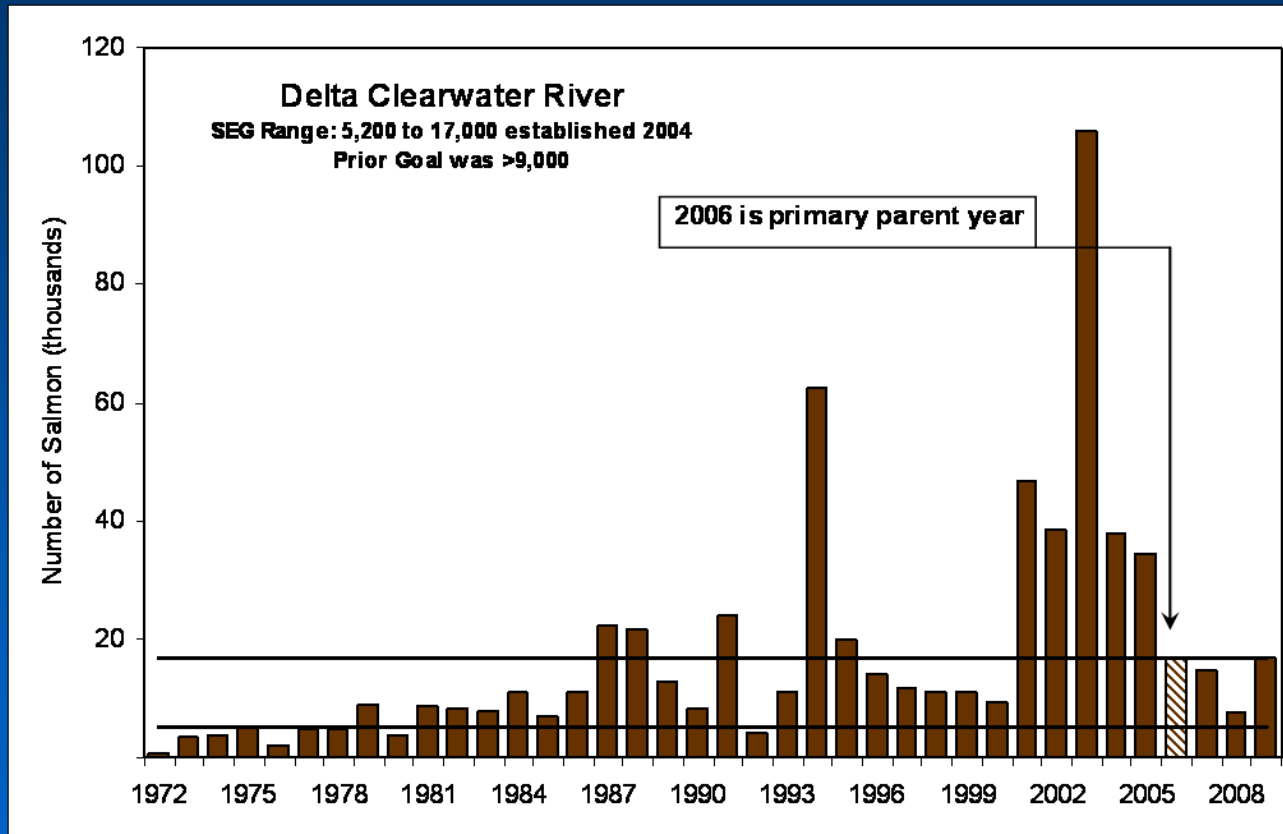




Coho Salmon Run Reconstruction



2010 Coho Salmon Outlook



- Assuming average survival
 - 2010 return is expected to be average.

2010 Fall Season Outlook

- ❑ Preseason run projection is 552,000 to 828,000 fall chum salmon.
- ❑ Coho salmon expected to be near average.
- ❑ Anticipate:
 - Most escapement objectives will be attained including Canadian stock components.
 - Amounts necessary for subsistence should be available.
 - Surpluses for commercial harvests will be determined inseason for both fall chum and coho salmon.

Emmonak, AK



Questions ?