



Proposed *Ichthyophonus* long-term monitoring plan



- I. Continue monitoring at Emmonak and Eagle to capture trend
 - Is the trend cyclic or sporadic?
 - Alternate monitoring years once trend determined
 - JTC has concerns over objectives, sampling techniques and locations

- II. Establish an *Ich.* prevalence study similar to ADFG's Salcha/Chena project in Canadian waters
 - Possibly wait until cycle is on upside of curve

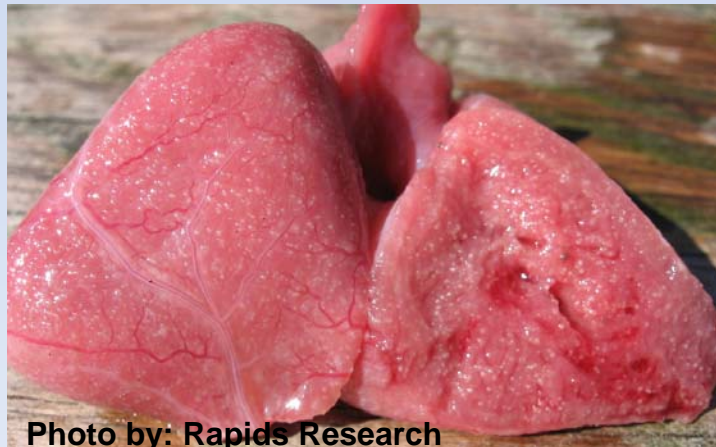


Photo by: Rapids Research