



2011 Yukon River Post-season Review (preliminary)



For:
Yukon River Panel
Dec 5-9, 2011
Whitehorse, YT



2011 Canadian-origin Chum Outlook:

Below average to average

605,000 – 870,000 (drainage wide)

Upper Yukon = ~25% of total run

151,000 – 217,000 (Cdn)

Fishing Branch = ~ 5% of total run

30,250 – 43,500 (Cdn)



2011 Outlook: Canadian origin Upper Yukon chum

Below average to average

151,000 – 217,000

ESCAPEMENT GOAL 70,000 – 104,000

TAC 65,900-116,800

- US Treaty share applied at 68% (mid-pt.) = TAC 44,800-79,400
- CDN Treaty share applied at 32% (mid-pt.) = TAC **21,100-37,400**

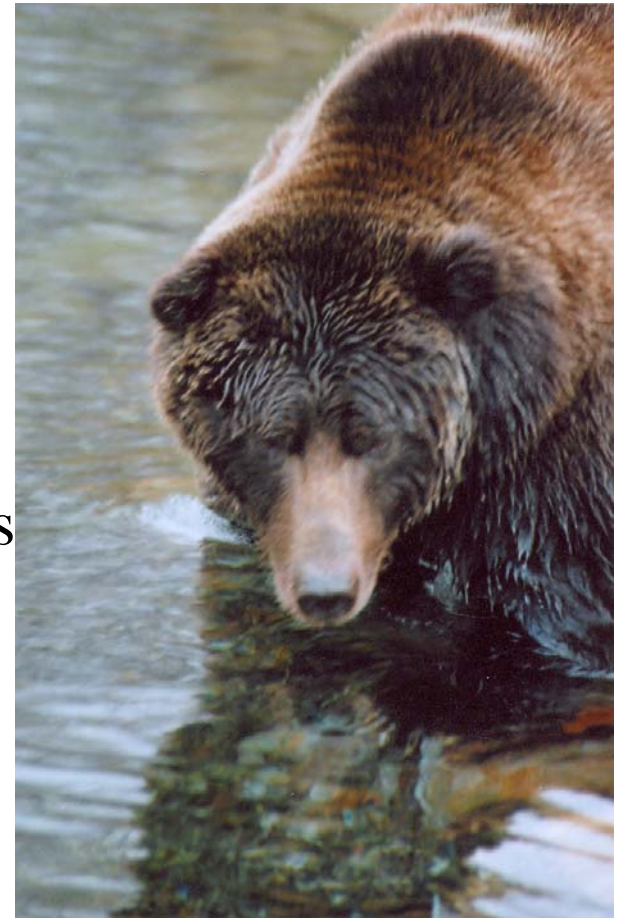
Border passage estimate

106,200 – 137,600



Pre-season planning:

- Development and discussion of decision rules through annual processes.



....and then the waiting begins.....



	Border Escapement Projections	Fishery	Guideline Harvest	Anticipated Management Action Chum salmon
RED ZONE	<40,000	FN	0	Closed.
		CF	0	Closed.
		RF	0	Closed, i.e. fall chum quota varied to zero.
		DF	0	Closed.
YELLOW ZONE	40,000 – 73,000	FN	0 to 3,000	Catch target to vary with abundance within zone. Catch is subject to International harvest sharing provisions.
		CF	0	Closed.
		RF	0	Closed, i.e. fall chum quota varied to zero.
		DF	0	Closed.
GREEN ZONE	>73,000	FN	3,000+	Unrestricted.
		CF	Variable	Catch target to vary with abundance and be consistent with International agreement on harvest shares.
		RF	0	Fishing opportunity provided, no catch anticipated.
		DF	0	Fishing opportunity provided, no catch anticipated.

Legend: FN = First Nation fishery; CF = commercial fishery; RF = recreational fishery; DF = domestic fishery.



- Management Plan (Upper Yukon)
 - First Nation
 - Unrestricted
 - Commercial/Domestic
 - Confirm **Green Zone** projection with Eagle Sonar in-season.
 - Anticipated Commercial/Domestic openings early in the season.



In-season Canadian management summary:

US indicators (starting with summer/fall relationship supported by Pilot Station/Rapids) were strong from the onset and remained so throughout the season.

- Unrestricted First Nation fishery
- Early commercial opening Aug 26 for 3 days
- 2 subsequent openings of 4 days
- Open from September 16 to October 9 for 23 days
- Extended to October 16

•i



2011 Outlook/Management Plan: Porcupine River chum salmon

Below average to average

ESCAPEMENT GOAL 22,000-49,000

TAC 2,640 – 6,880

(applying harvest shares as per YRSA mainstem)

Average VGFN harvest 3,500

Yellow – Green Zone



2011 Harvest Summary - chum(preliminary)

Area	First Nation	Commercial & Domestic	Totals
Upper Yukon	1,000	5,092	6,092
Porcupine	1,771	na	1,771
Total	2,771	5,092	7,863



- Old Crow
- Vuntut Gwitchin Government

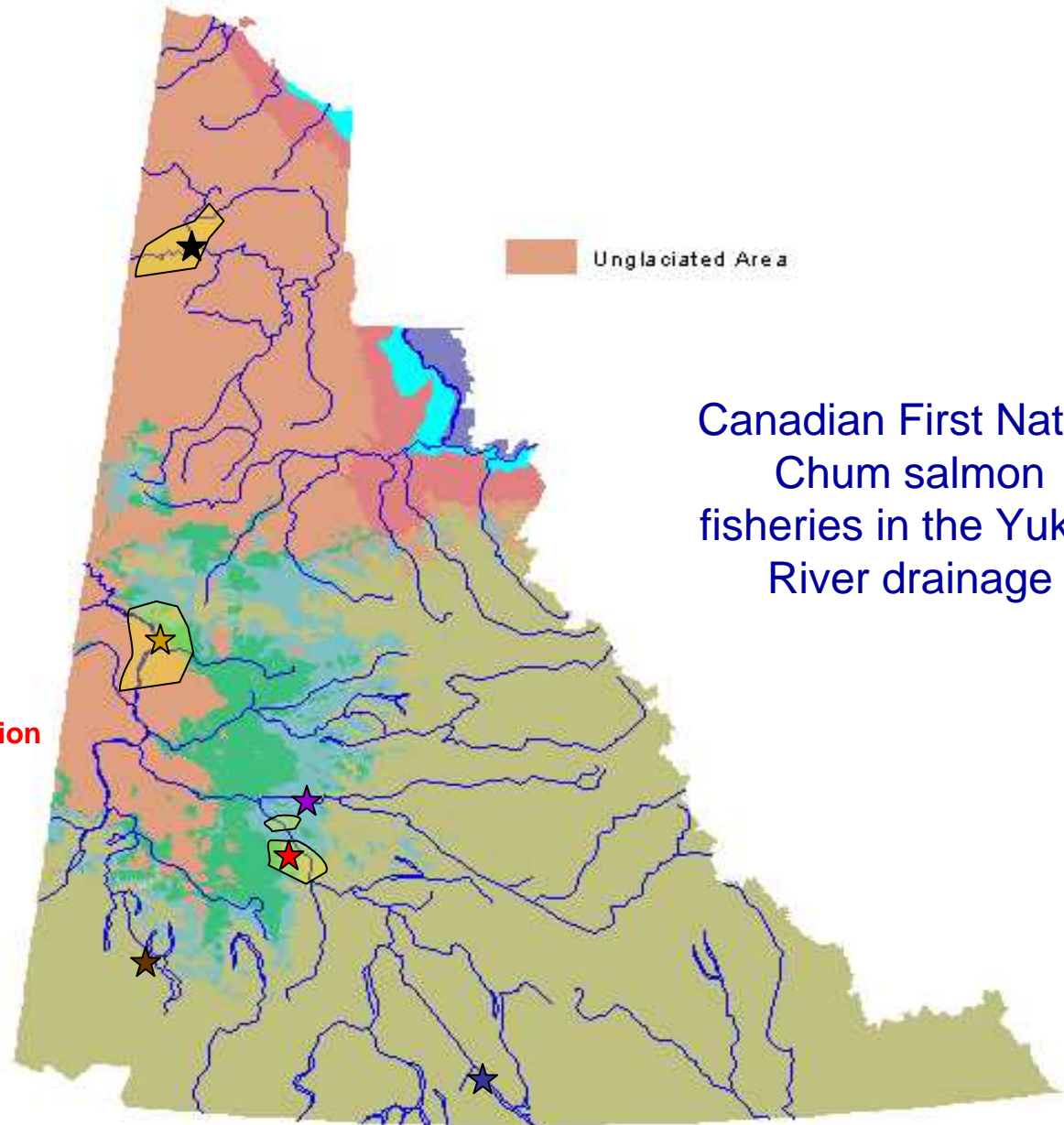
- Dawson
- Tr'ondëk Hwëch'in First Nation

- Pelly Crossing
- Selkirk First Nation

- Carmacks
- Little Salmon Carmacks First Nation

- Burwash Landing
- Kluane River First Nation

- Teslin
- Teslin Tlingit Council



Canadian First Nation Chum salmon fisheries in the Yukon River drainage





Survey Approach

- calendar distribution
- regular camp visits
- daily catches of salmon
- gear type
- location
- effort

Chum Harvest

2011

10 Yr Avg

Upper Yukon	Dawson	502	1,696
	Pelly	269	257
	Carmacks	0	142
	Kluane River	<u>N/A</u>	<u>21</u>
	Total Reported	771	2,061
Porcupine-	Old Crow	1,771	2,615
	Total	2,542	

Porcupine Coho Harvest 63



Chum Salmon Assessment



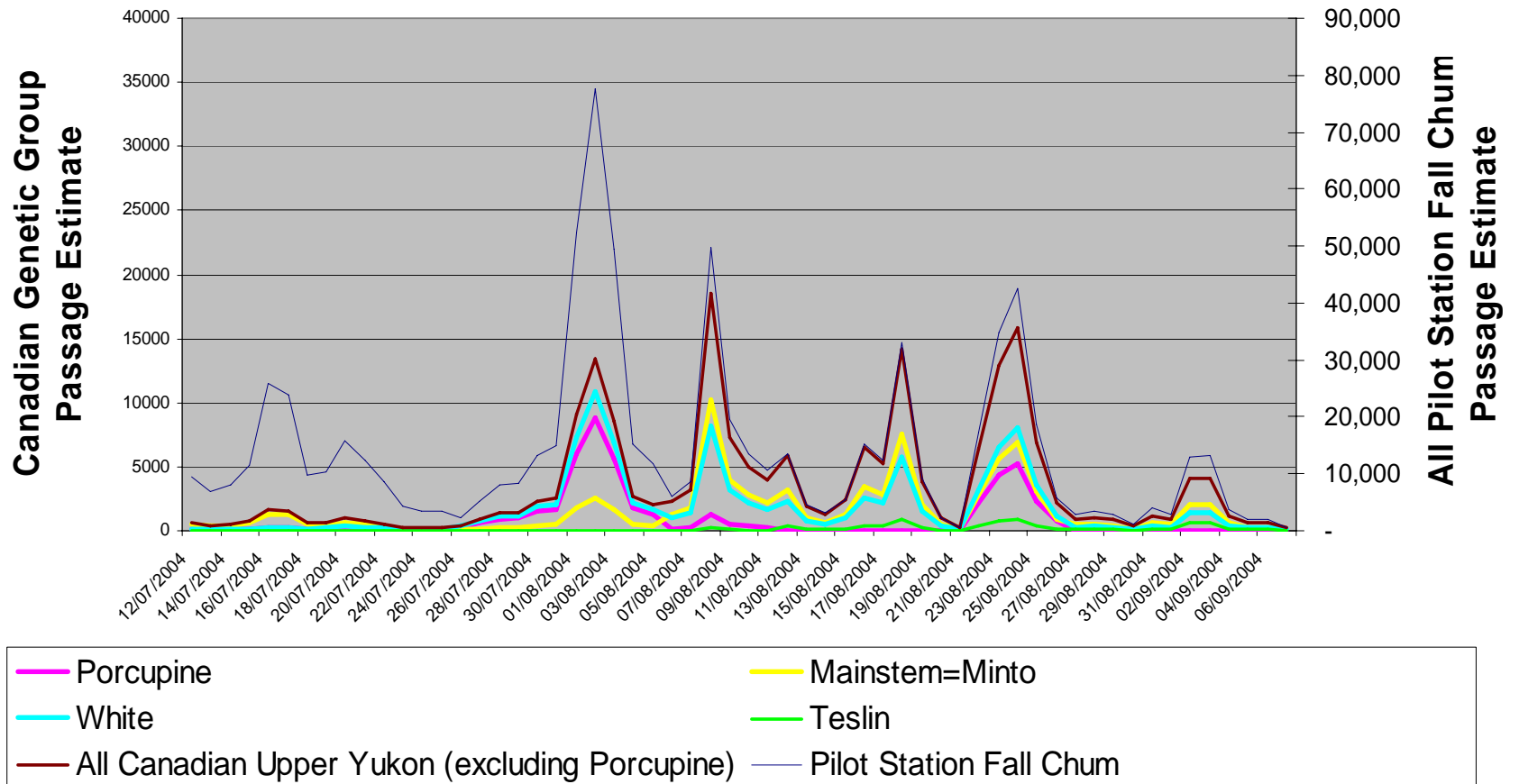


Yukon River Chum in Canada 2011

- Eagle Sonar Estimate: 224,355
- Eagle Harvest preliminary estimate: 15,000
- Canadian First Nation Harvest: 1,000*
(* actual reported harvest to date: 771)
- *Canadian Commercial Harvest* 5,092
- Spawning Escapement: 203,263
- Spawning Escapement Goal: 70,000 to 104,000



Pilot Station Fall Chum Passage by Genetic Group, 2011





Genetic Stock Composition

	Fall 1	Fall 2	Fall 3	Fall 4	Fall 5	Fall 6	Total	Adjusted 10%
Mainstem	2,185	8,627	22,167	22,828	19,228	8,147	83,183	91,501
White	1,428	36,092	17,592	17,132	22,345	5,487	100,077	110,084
Teslin	18	135	450	2,607	2,543	2,344	8,097	8,907
							191,356	210,492

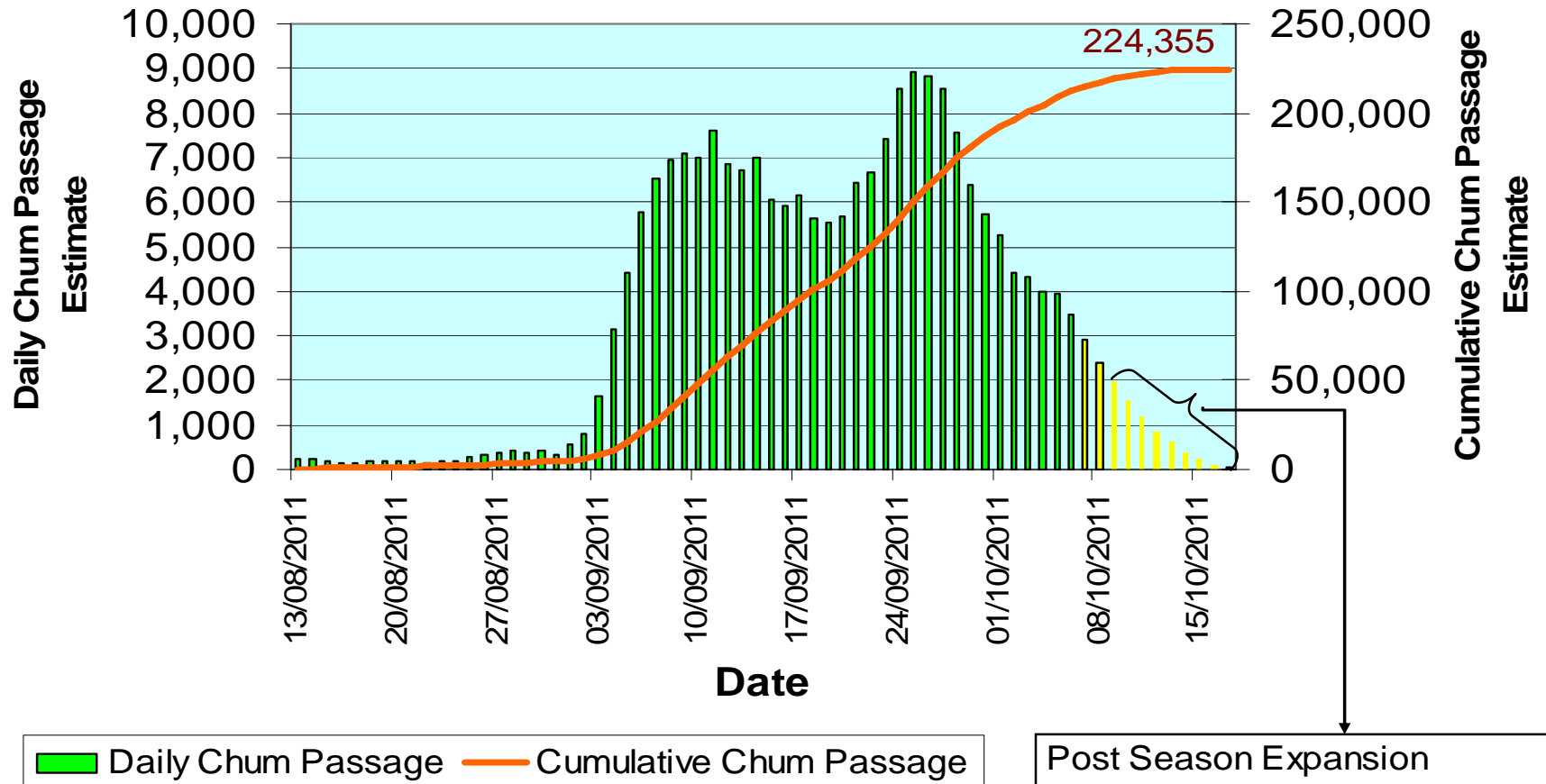


Eagle Sonar



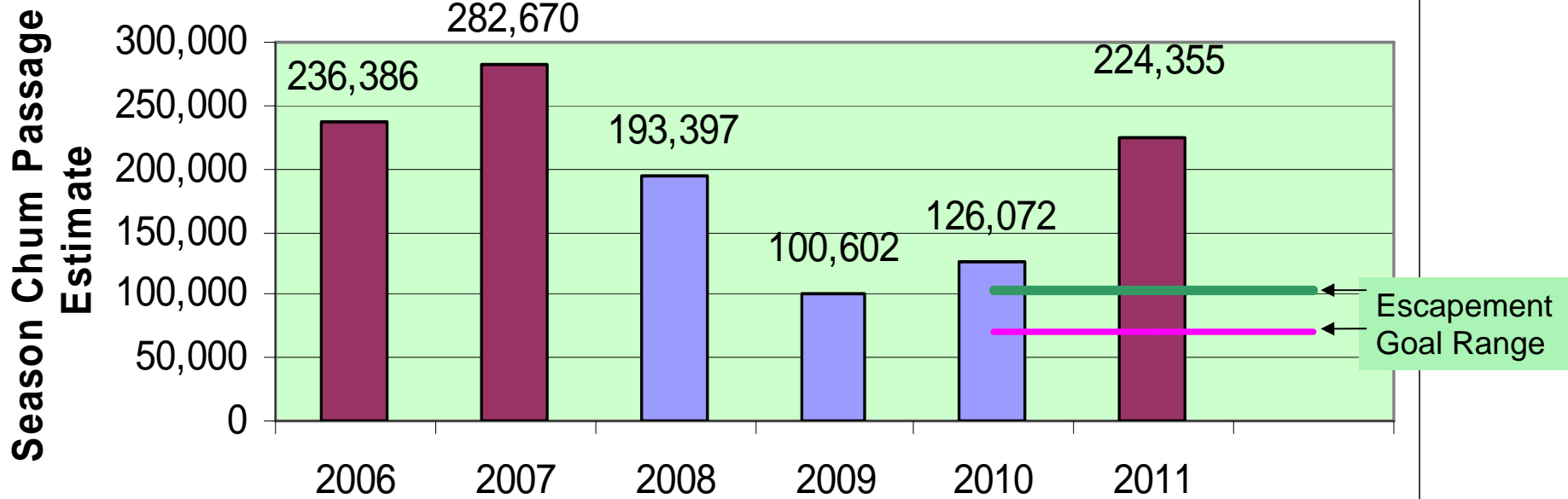


Eagle Sonar Fall Chum Passage Estimate, 2011





Eagle Sonar Passage Estimates, 2005 to 2011



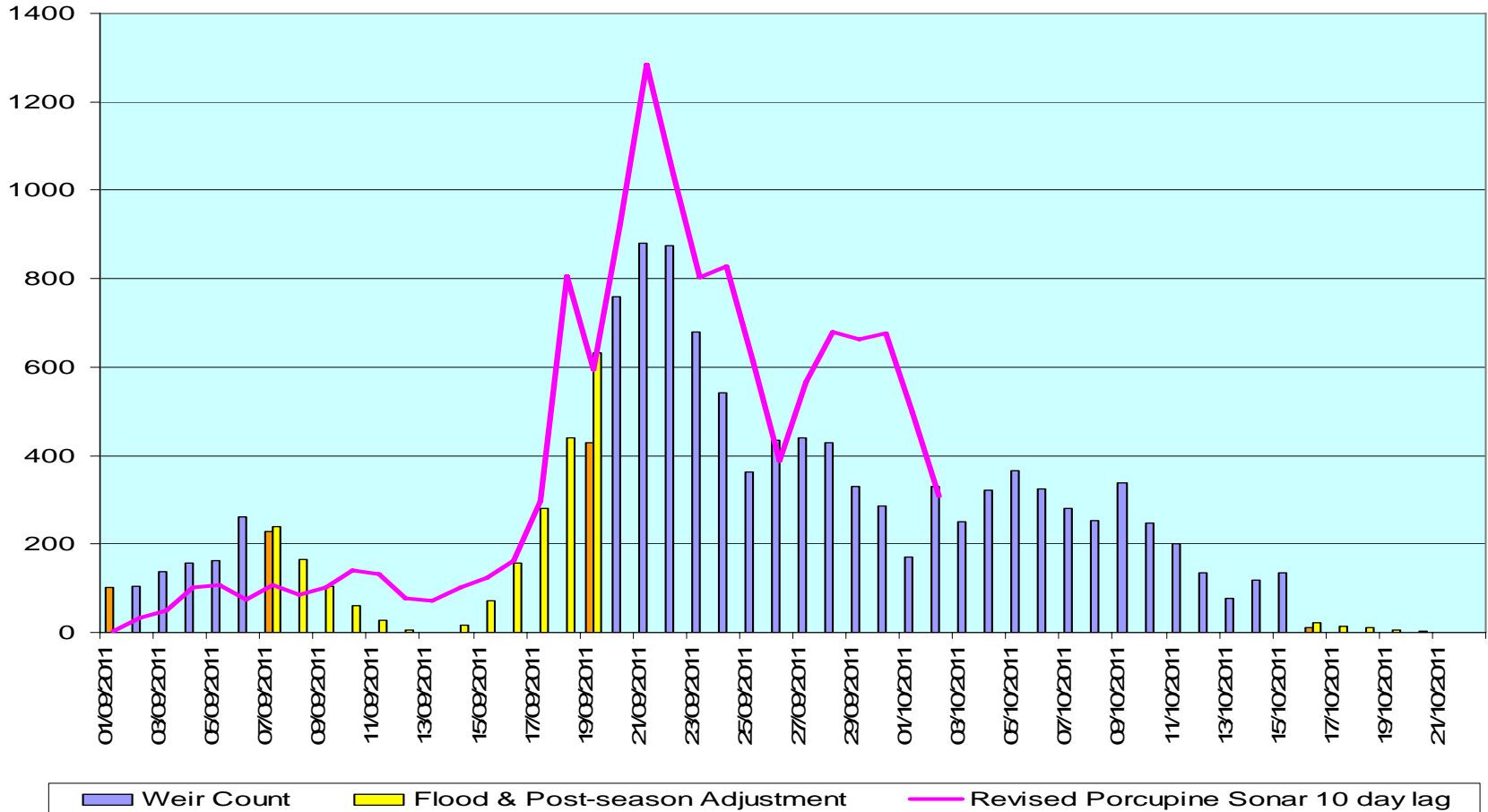


Fishing Branch River Chum 2011

- Fishing Branch Weir Estimate: 13,085
 - Spawning Escapement: **13,085**
- Spawning Escapement Goal: 22,000-49,000

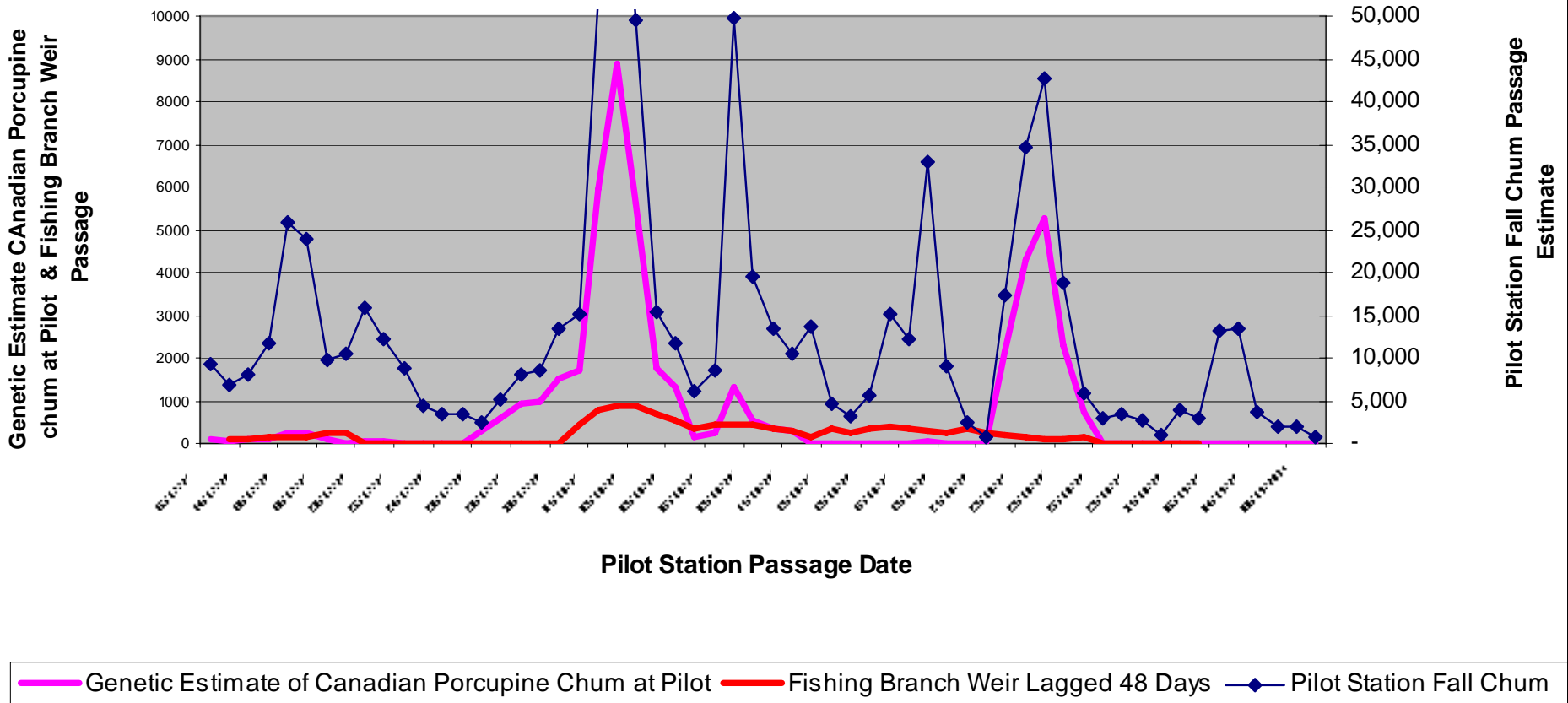


Fishing Branch Weir Chum Salmon Daily Passage 2011



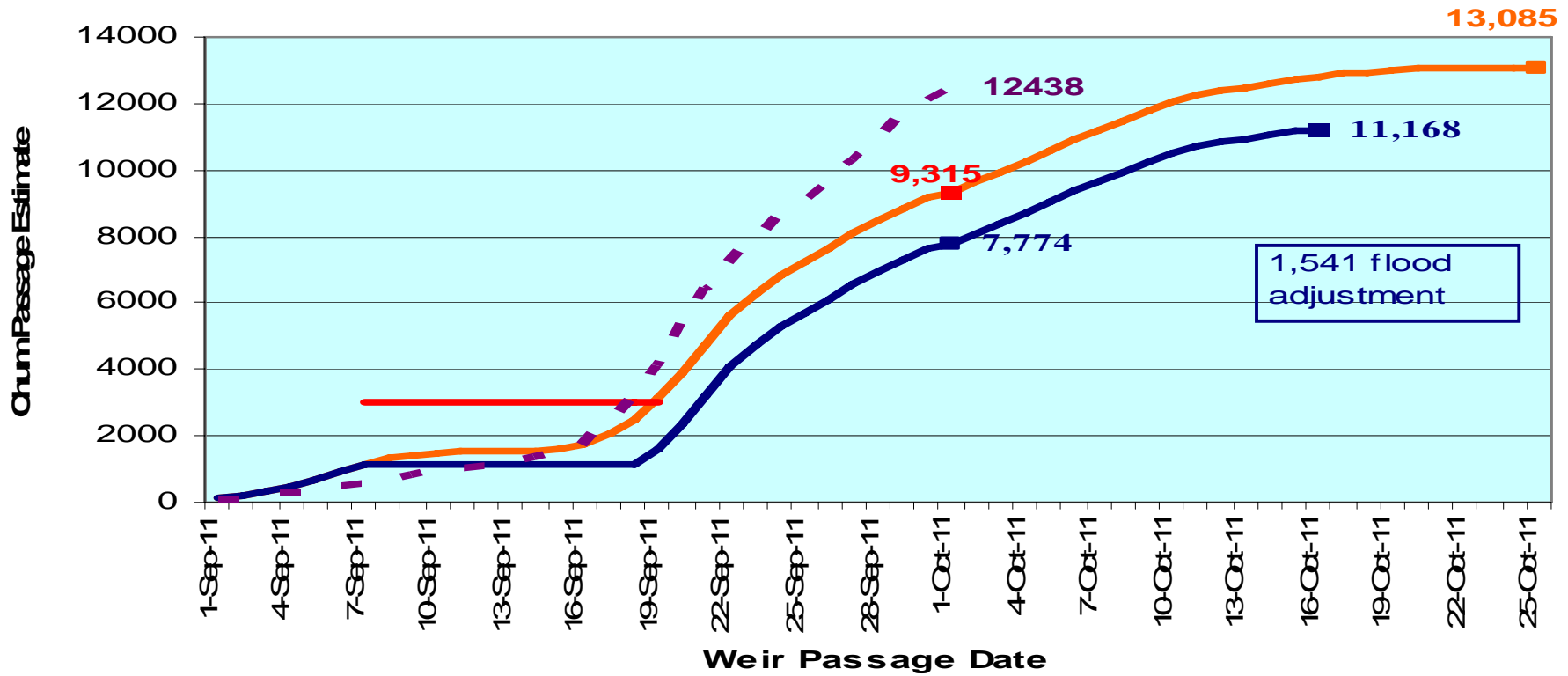


Pilot Station Fall Chum Passage & Fishing Branch Weir Passage





Fishing Branch Weir Cumulative Chum Passage, 2011

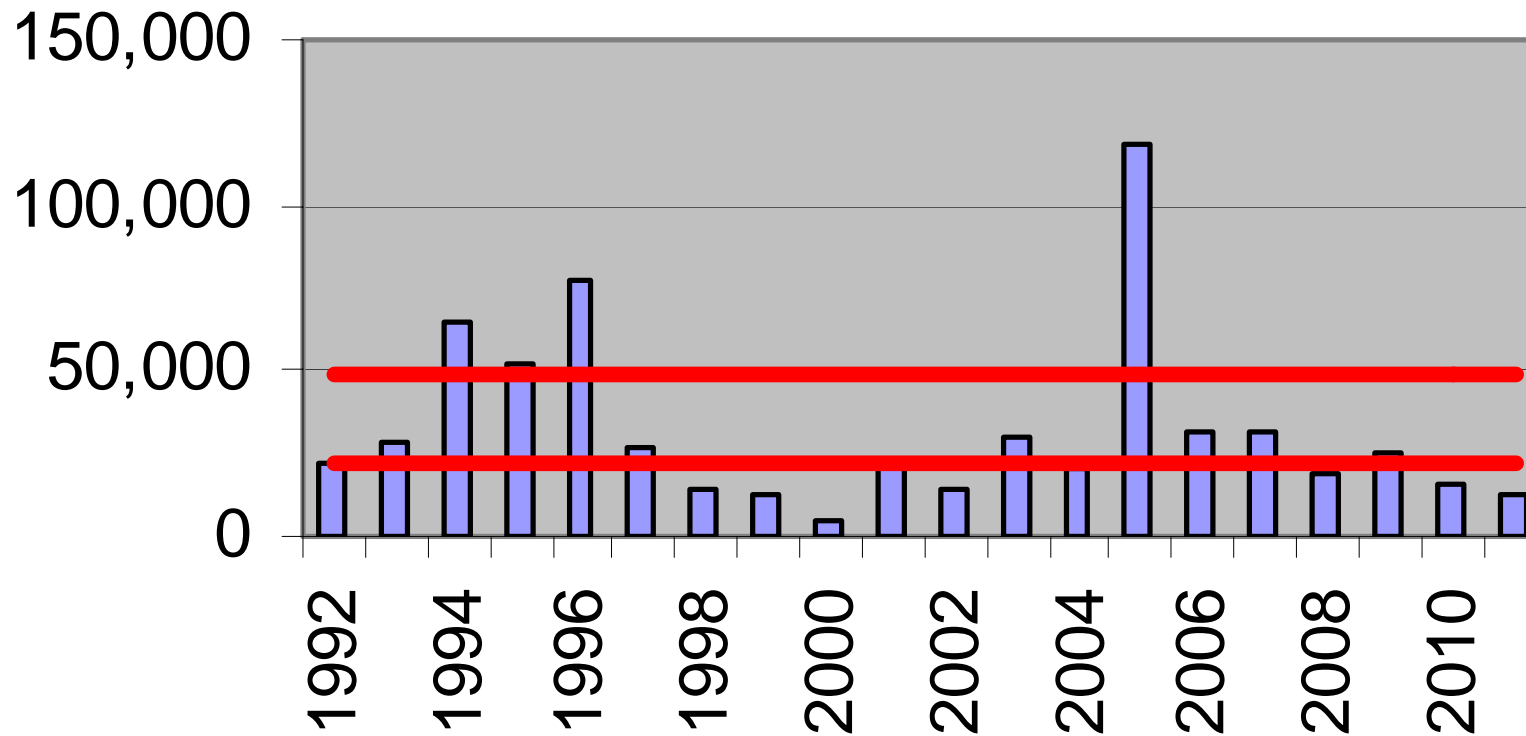


- Adjusted Cumulative Weir Passage
- Flood (Sept 7 to Sept 19)
- Weir Count without adjustments
- - - Porcupine Sonar 9 days prior to weir date





Fishing Branch River Chum Spawning Escapement





Fishing Branch River Total Chum Run, 2011

- Weir Spawning Escapement Estimate: 13,085
- Old Crow Harvest Estimate (*1,771x 75%) : 1,328*
- AK Harvest estimate : 6,697**

(** assuming basin harvest rate of 31.73%:

237,000 commercial + 80,000 subsistence out of total 1,000,000)

Total Fishing Branch Run Estimate: 21,110

Fishing Branch Inseason Genetics Estimate @ Pilot 39,000

*(excludes downstream harvest) assuming Fishing Branch Comprises
75% of Canadian Porcupine Run, & Pilot adjusted 10%)*

Preseason Forecast for Fishing Branch (5% of drainage wide): 30,250 – 43,500



Yukon Chum Scale Samples 2011

- Fishing Branch 713
- Kluane Lake 60
- Kluane River ~15

Yukon Chum Baseline Genetic Samples 2011

- Kluane Lake 60
- McQuesten River 0

