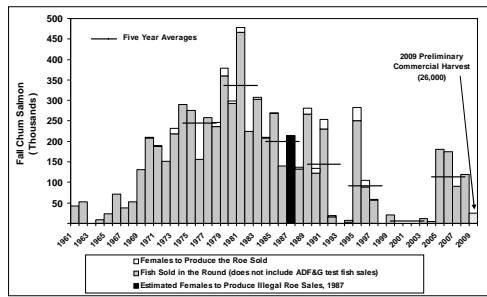
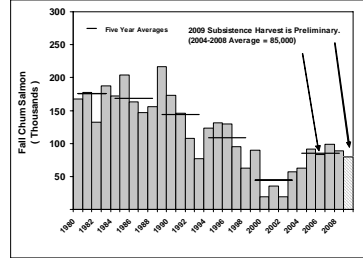


Yukon River Fall Chum Salmon U.S. Commercial Harvest



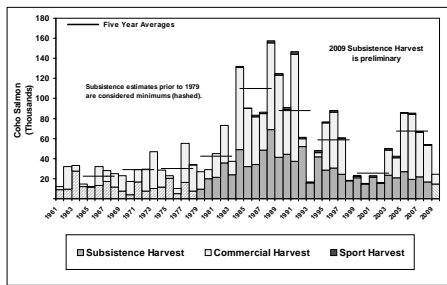
7

Yukon River Fall Chum Salmon U.S. Subsistence Harvest



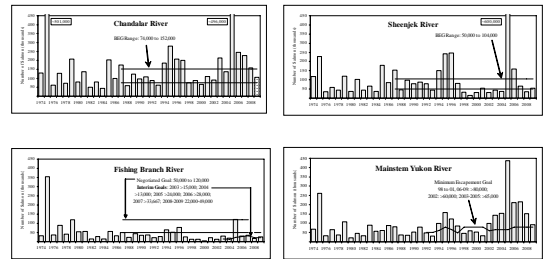
8

Yukon River Coho Salmon U.S. Harvests



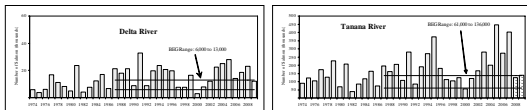
9

Select Upper Yukon River Fall Chum Salmon Escapement Estimates

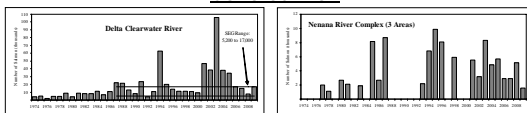


10

Select Tanana River Escapement Estimates Fall Chum Salmon

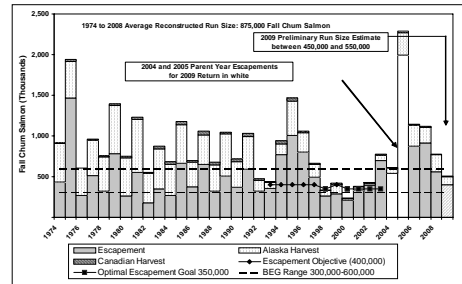


Coho Salmon



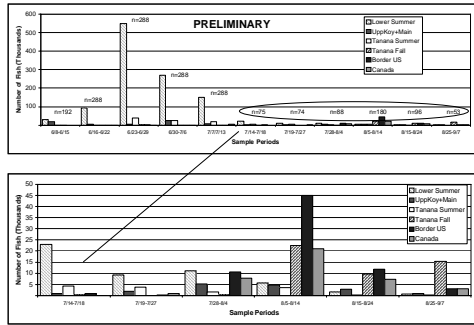
11

Yukon River Fall Chum Salmon Reconstructed Total Run Size



12

Chum Salmon Genetics 2009



13

2009 Fall Season Summary

- Fall Chum Salmon
 - Lower than expected production levels.
 - Subsistence fishing time was reduced for a portion of the run.
 - Personal Use and Commercial Fisheries were closed mid-season.
 - Drainage-wide escapement goal was achieved.
 - Most individual escapement goals were met.
 - Except for Sheenjek River.
- Coho Salmon
 - Timing appeared average to slightly early.
 - Commercially targeted at the end of the run.
 - Escapement appears to be slightly below average.

14

Walking back along Nenana River after conducting coho salmon foot surveys on local creeks



Photo by ADF&G.com