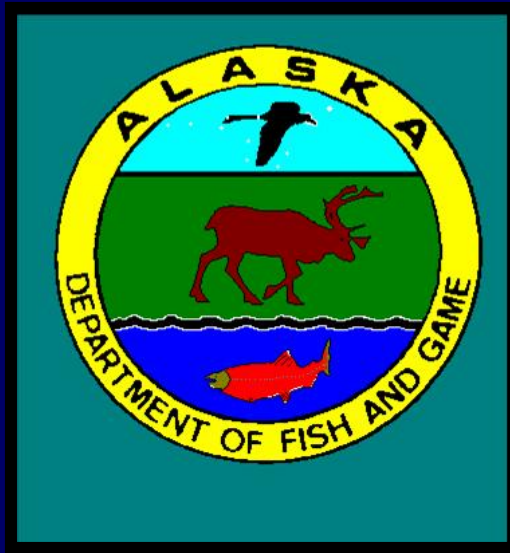


2008 Chinook and Summer Chum Season Summary



**Yukon River Panel Meeting
December 2008
Anchorage, Alaska**

US Preseason Outlook Chinook

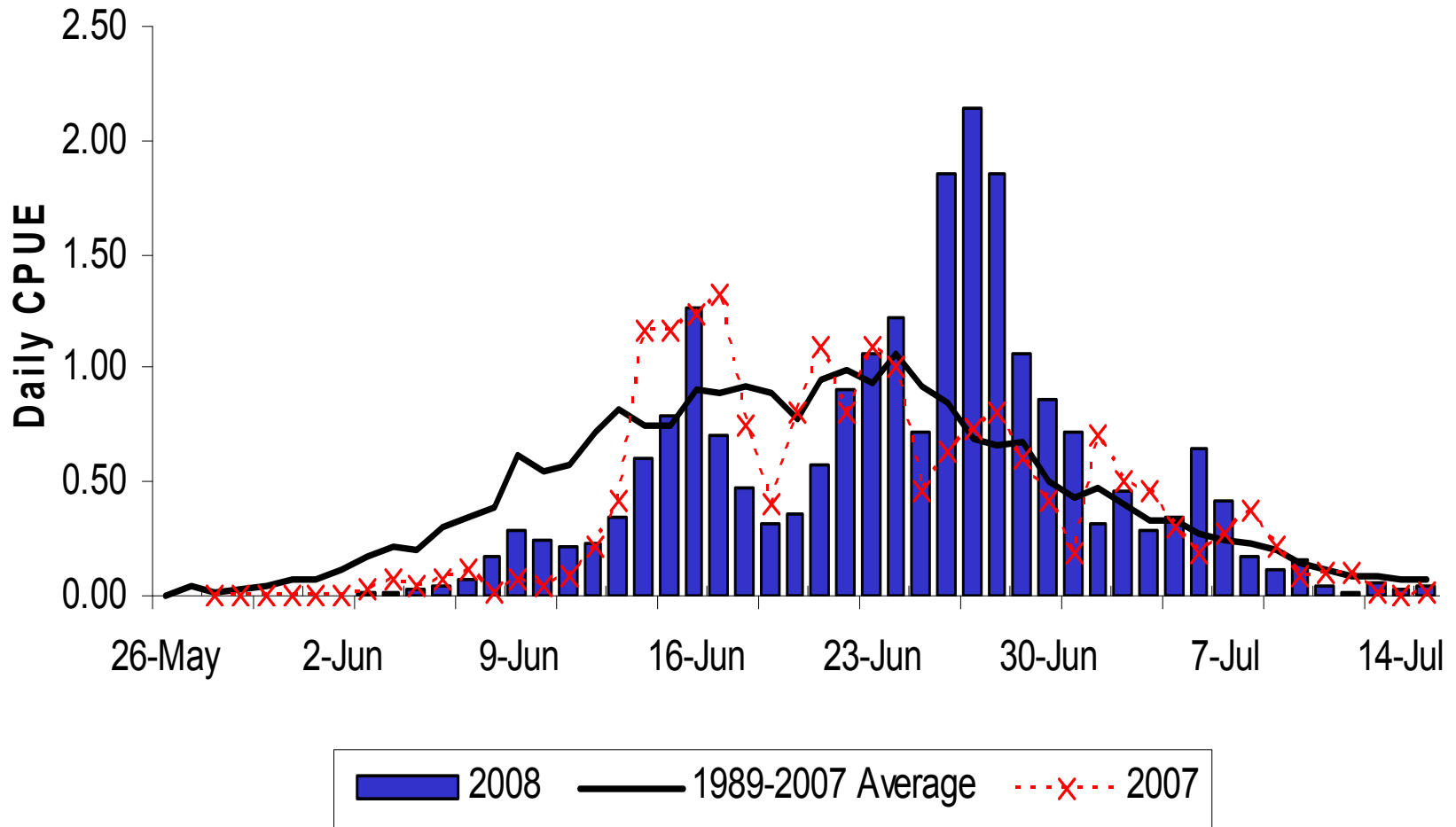
Below average run:

- 2008 Chinook salmon run was anticipated to be similar to 2007 run.
- Anticipated enough fish available to provide for:
 - Escapement
 - Subsistence Priority
 - Canadian Border Obligations
 - 5,000 to 30,000 commercial

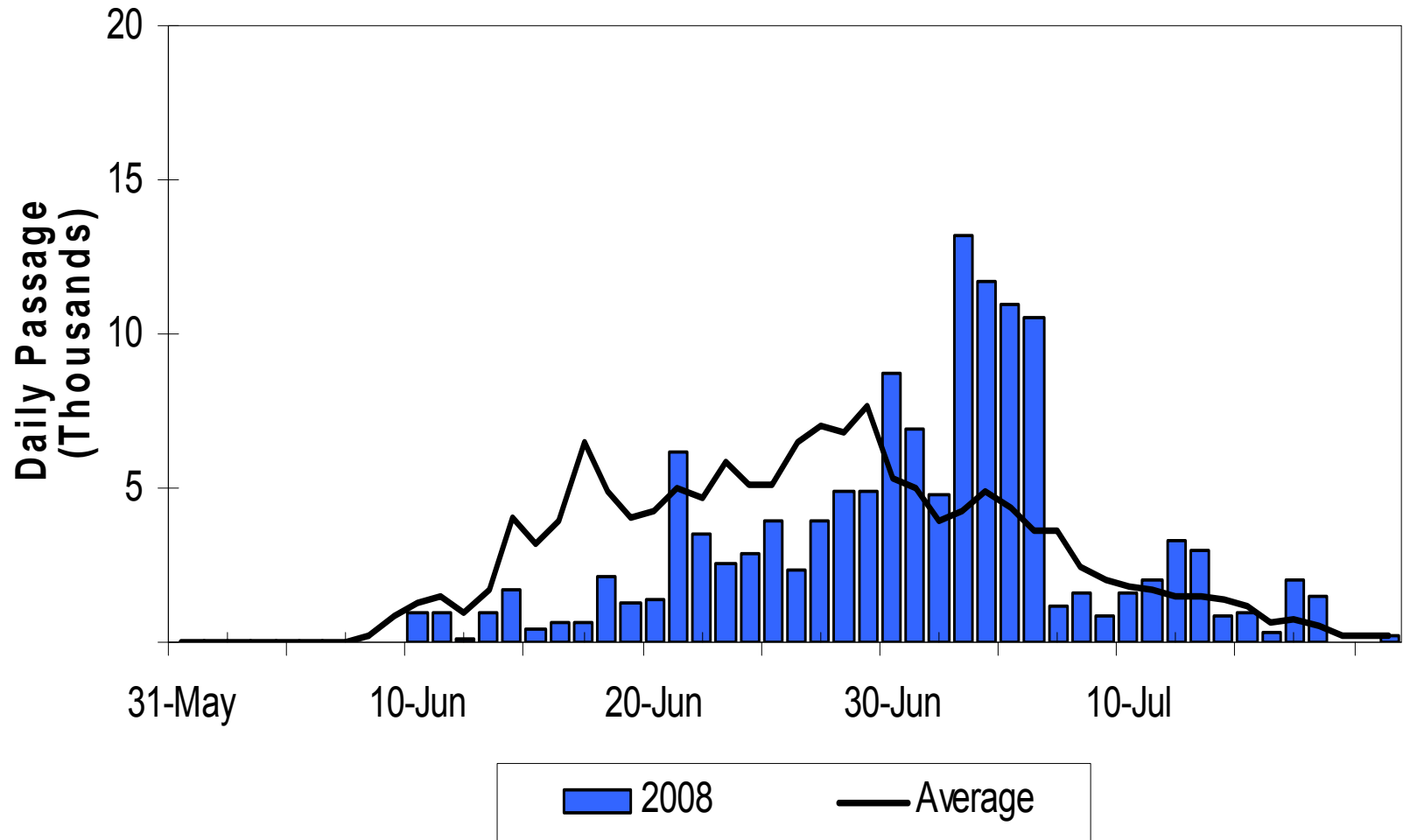
Management Strategies

- Manage for escapement
- Continue the regulatory subsistence salmon fishing schedule
- Delay directed Chinook commercial until mid-point of run
- Actions based on the evaluation of inseason indicators of run strength

2008 LYTF Daily CPUE



Pilot Station Sonar Daily Passage



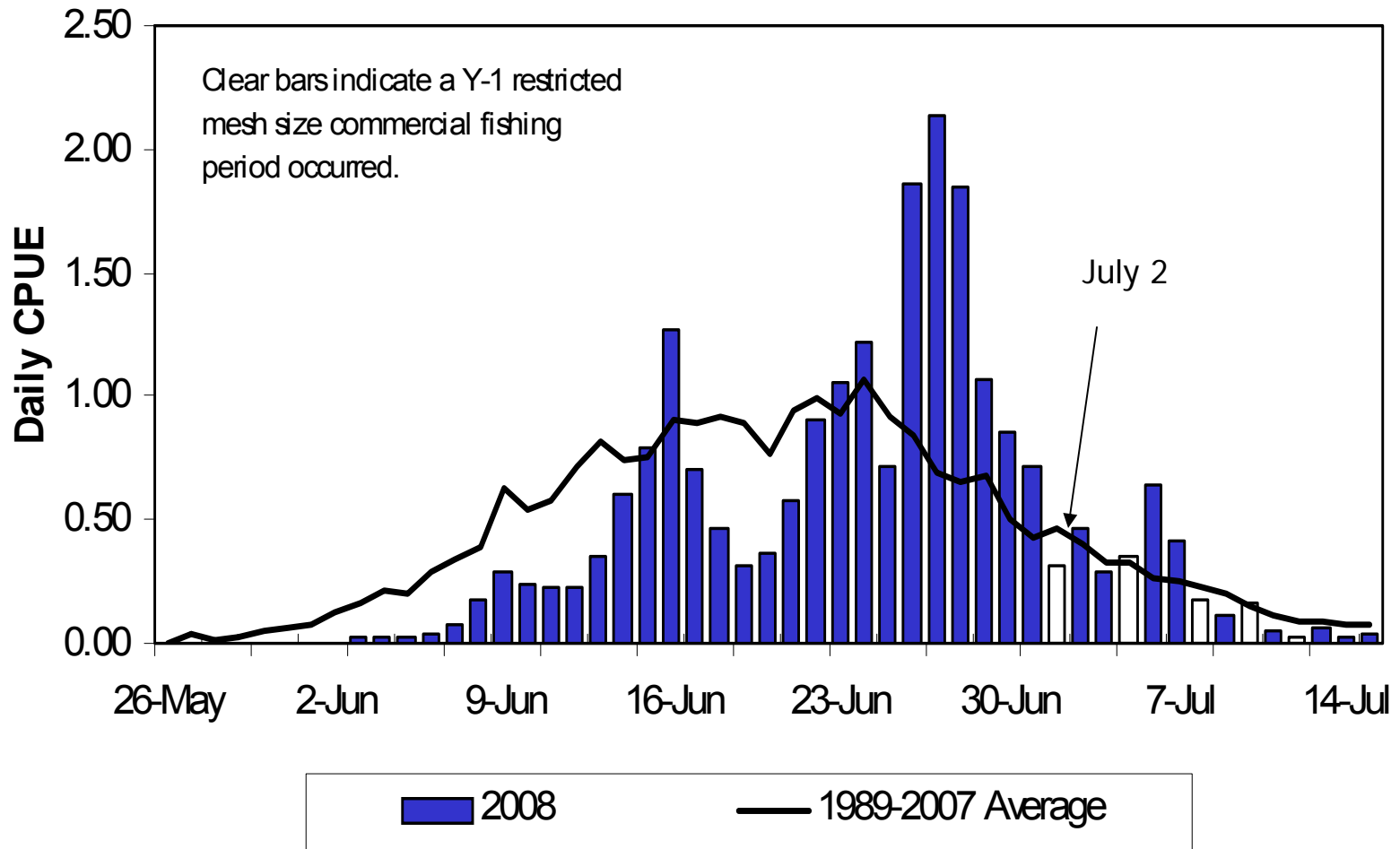
Inseason Indicators

- LYTF – CPUE half the historical average by June 20
- Pilot Station sonar – first pulse 10,000 fish
- Projection passed Pilot Station sonar as low as 80,000 fish

YRDFA Teleconferences

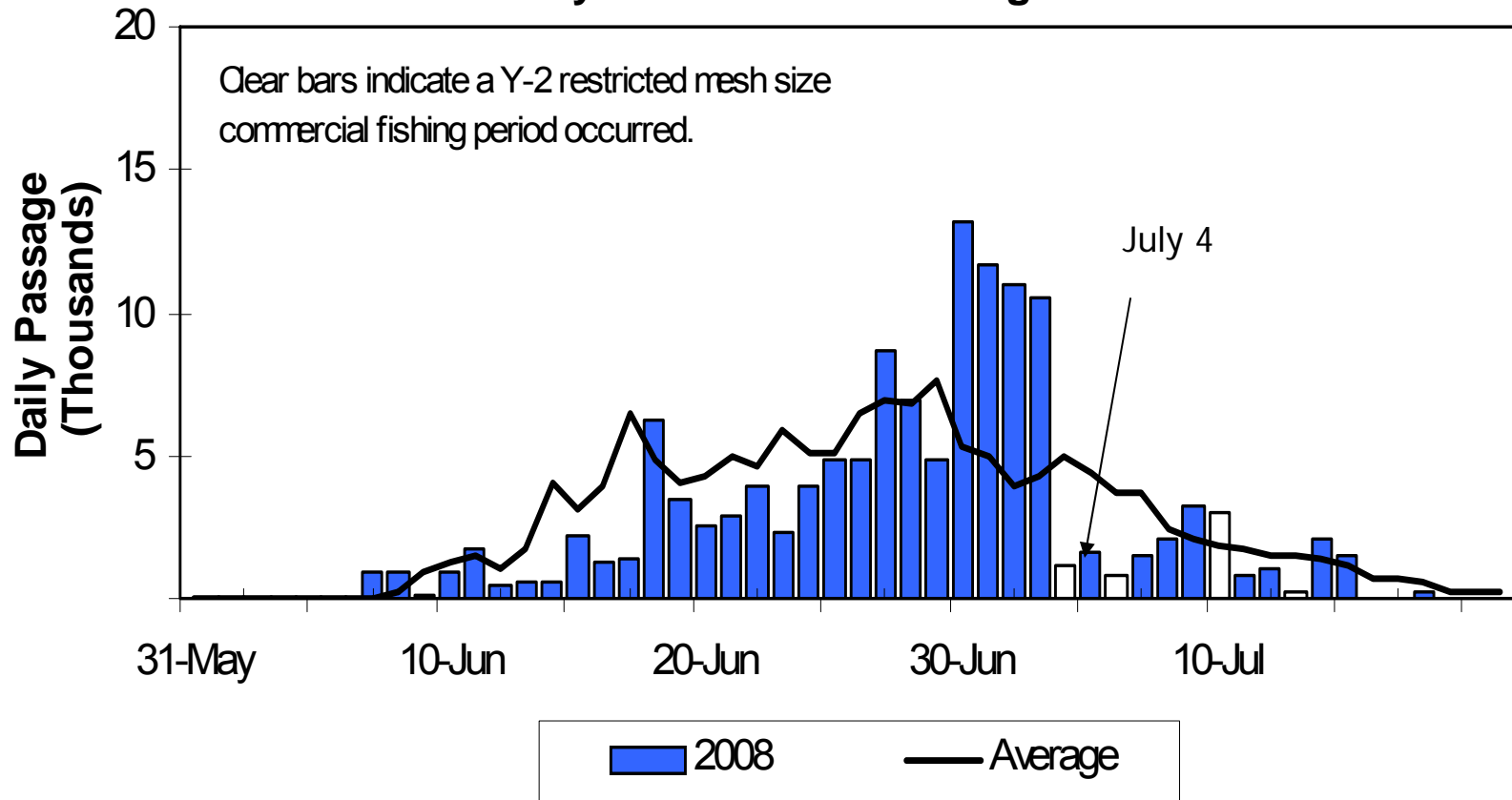
- Run assessment provided by managers
- Potential management strategies discussed
- Subsistence fishers encouraged to provide input

Y-1 Restricted Commercial Periods



Y-2 Restricted Commercial Periods

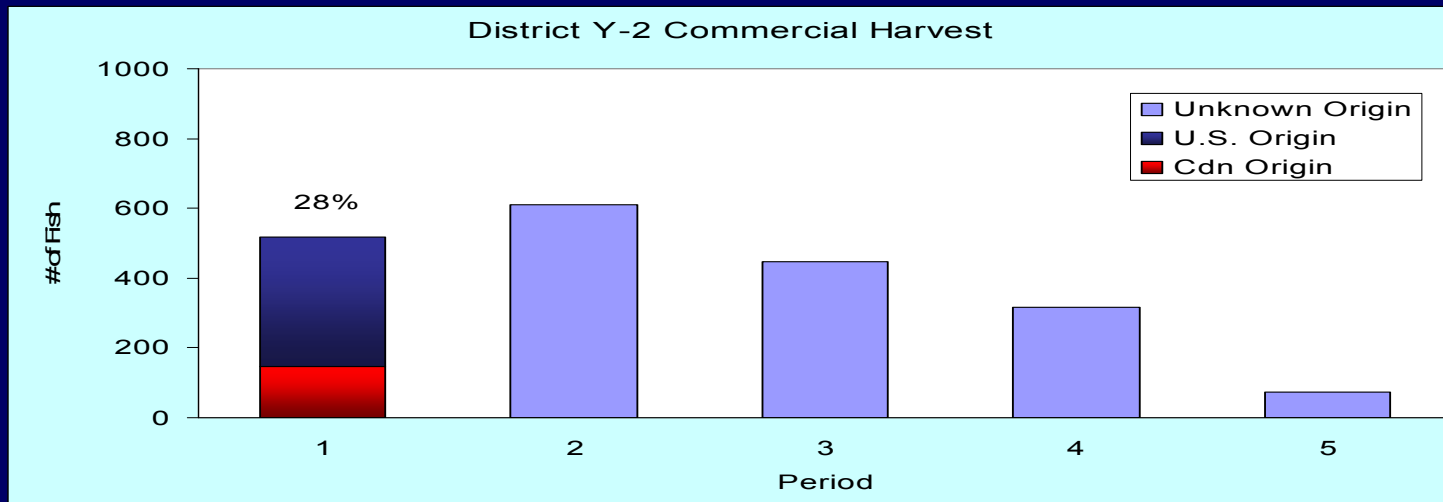
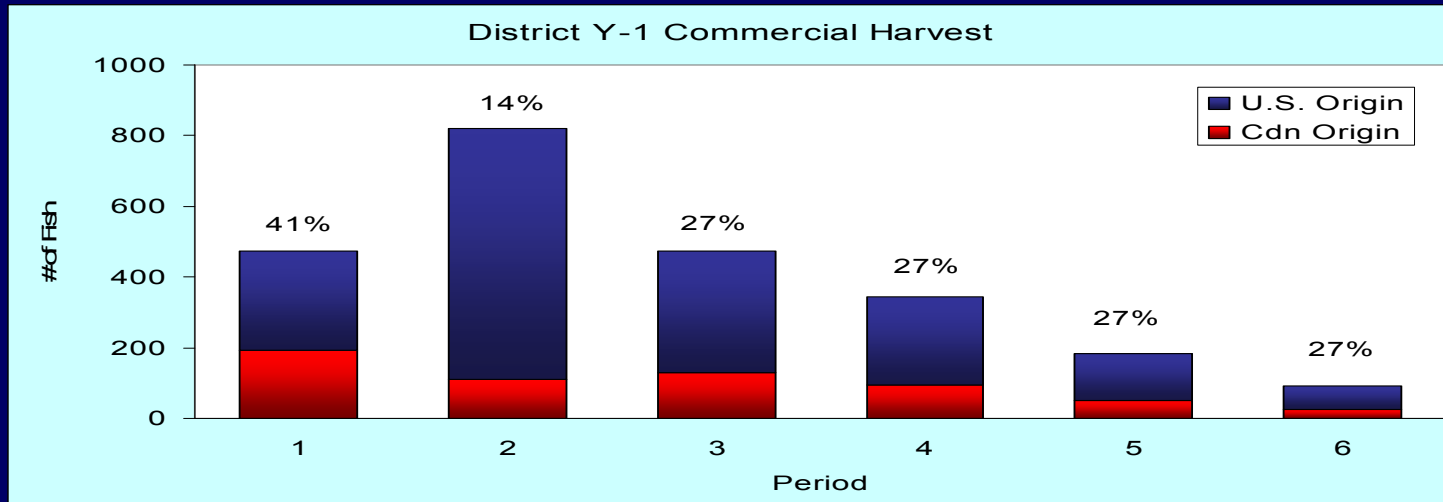
Pilot Station Sonar
Daily Chinook Salmon Passage



US Incidental Chinook Harvest

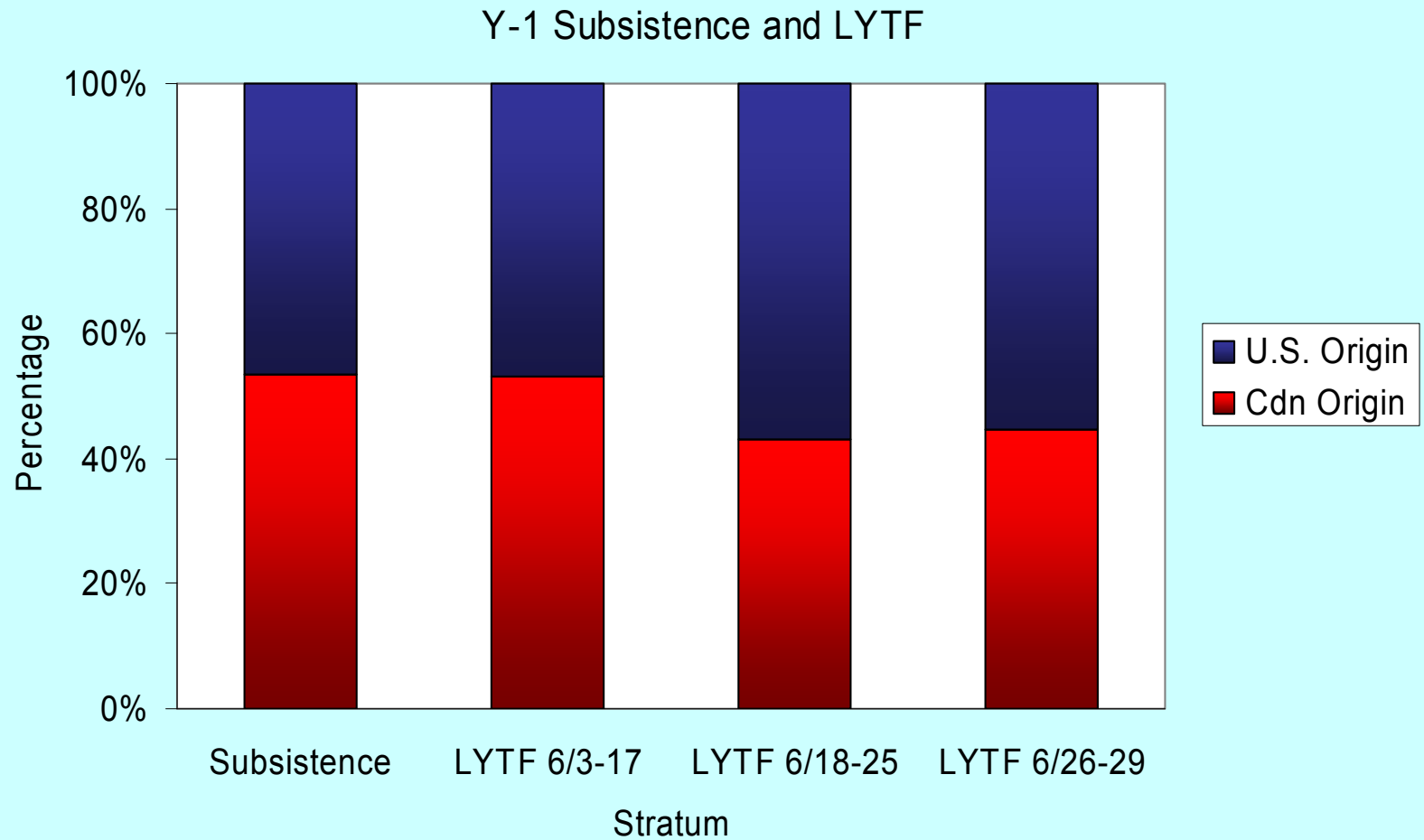
- Commercial Harvest = 4,641
 - Recent 10-year avg = 39,367 Chinook
 - 88% below recent 10-year avg
 - Subsistence Harvest- data pending
- Total US Harvest- data pending

Y-1 and Y-2 Harvest

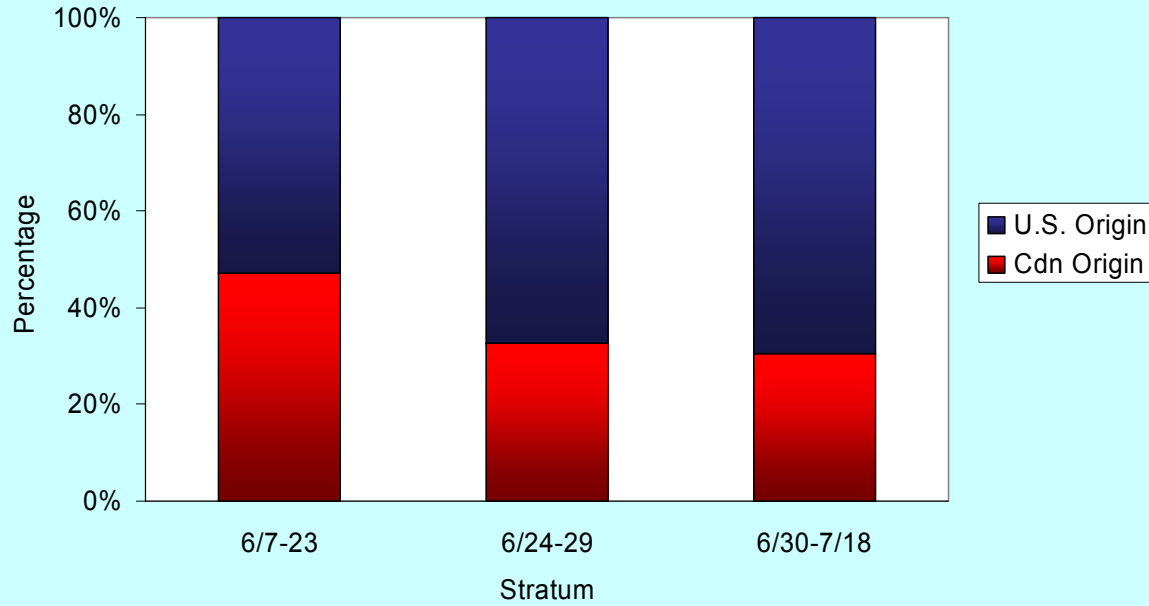


Y-1 harvest = 643, Y-2 = 586 Canadian

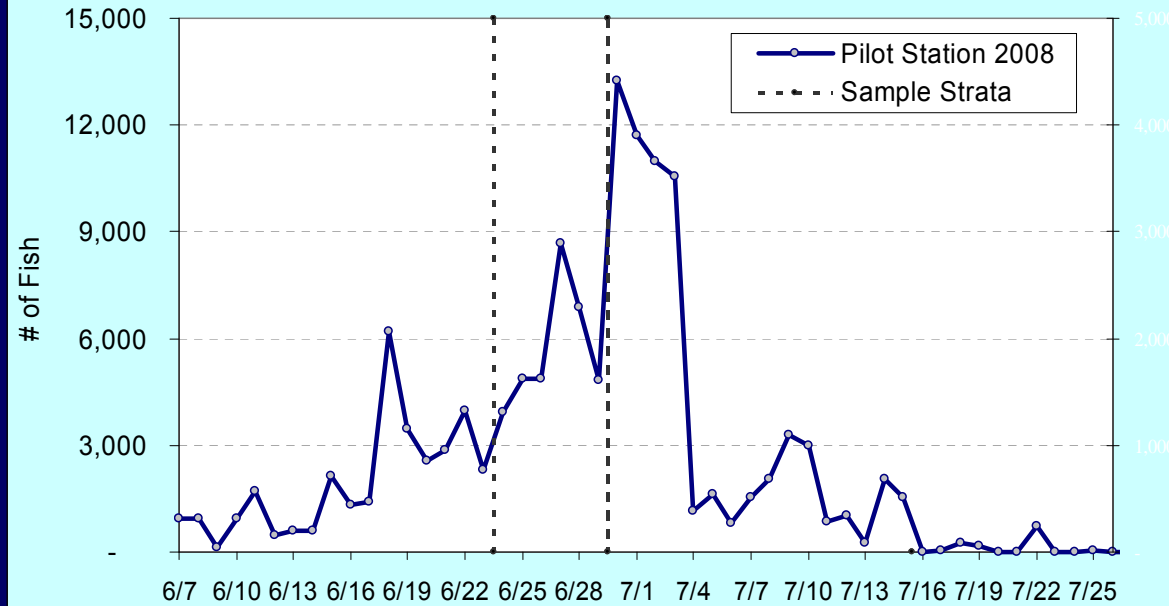
Y-1 Subsistence and LYTF



Pilot Station Sonar Test Fishery



Pilot Station Sonar Daily Passage Estimates



Total Canadian run reconstruction

Based on Pilot Station

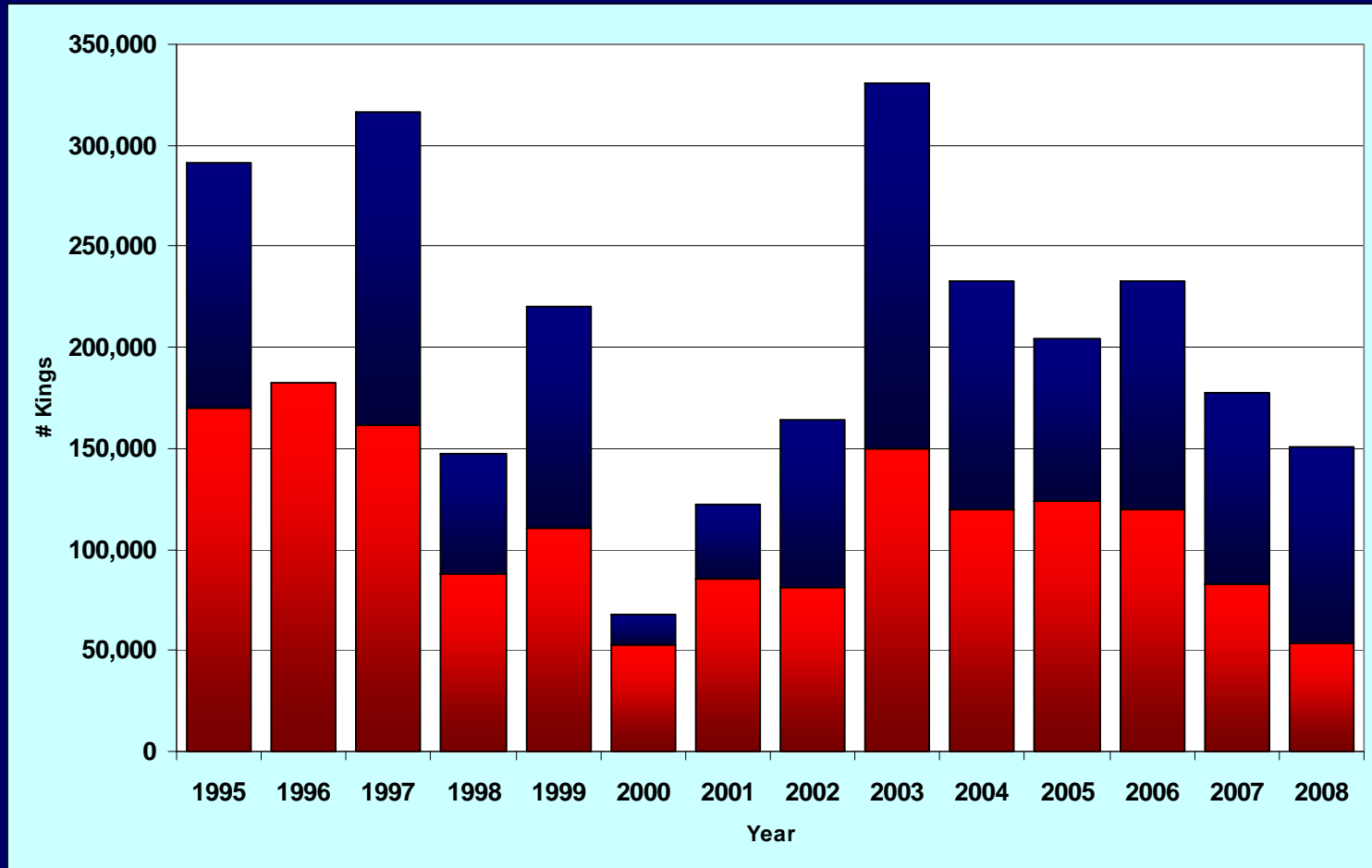
	Estimated Cdn-origin run	Estimated Total run
2* Andraefsky		8,484
Y-1 Commercial	643	2,530
Y-1 Subsistence	3,209	6,000
Y-2 Commercial	586	2,111
Y-2 Subsistence	4,000	8,000
Pilot Station	46,337	128,690
Pilot Sta-based Total Cdn run	54,776	155,815

Total Canadian run reconstruction

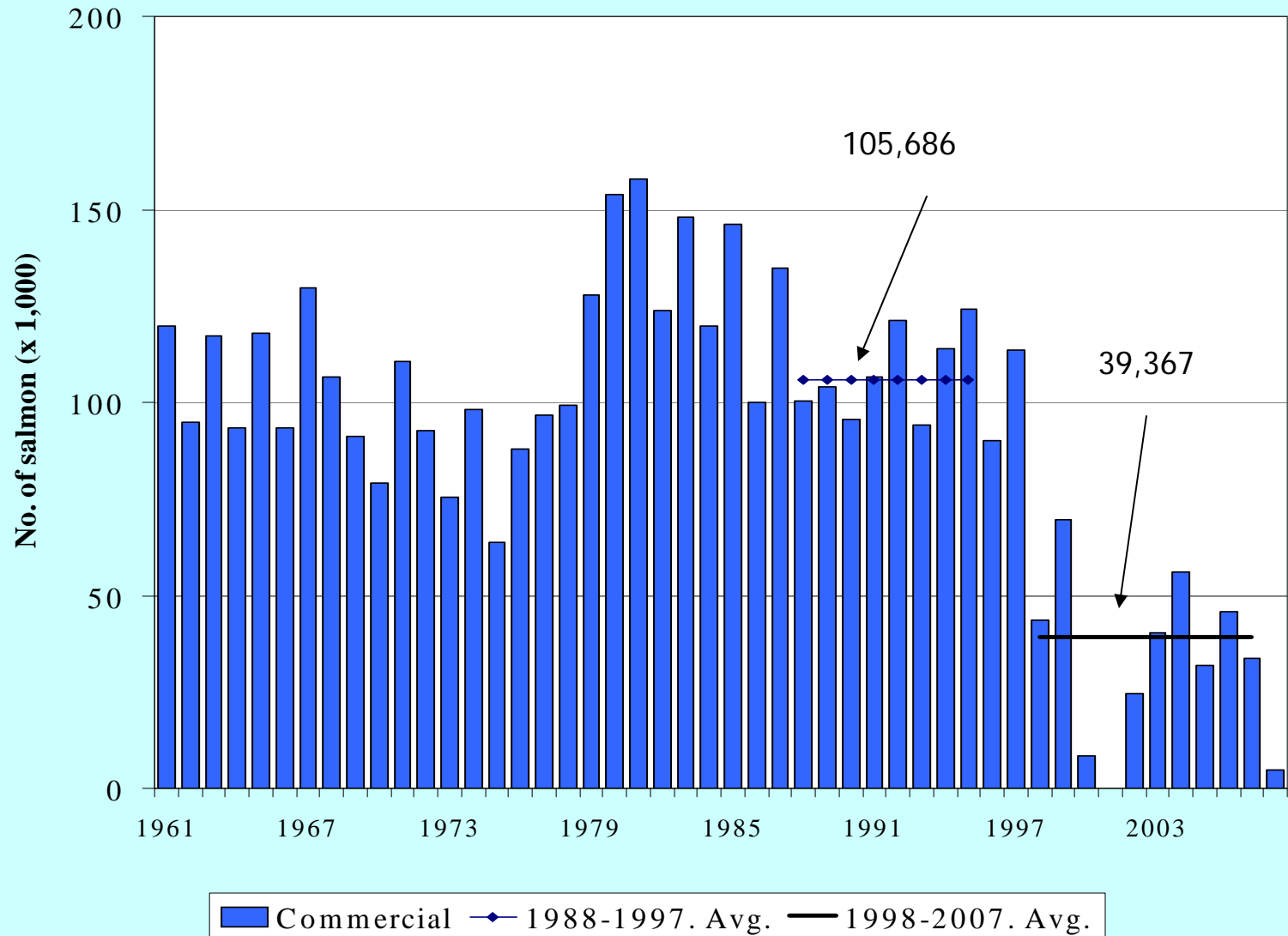
Based on Eagle Sonar

	Cdn-origin run
Y-1 Commercial	643
Y-2 Commercial	586
Subsistence (40% of 48,000)	19,200
Eagle Sonar	38,097
<hr/>	
Total Cdn run 40% subsistence	58,527

Pilot Station total run



US Commercial Harvest Chinook



US Chinook Escapement Summary

- Tributaries with **SEGs**: Most escapements could not be assessed
- Tributaries with **BEGs**: Lower end of Escapements were met
- Canadian escapement: 32,000
 - 28% below the goal of >45,000
- Total run abundance was below average

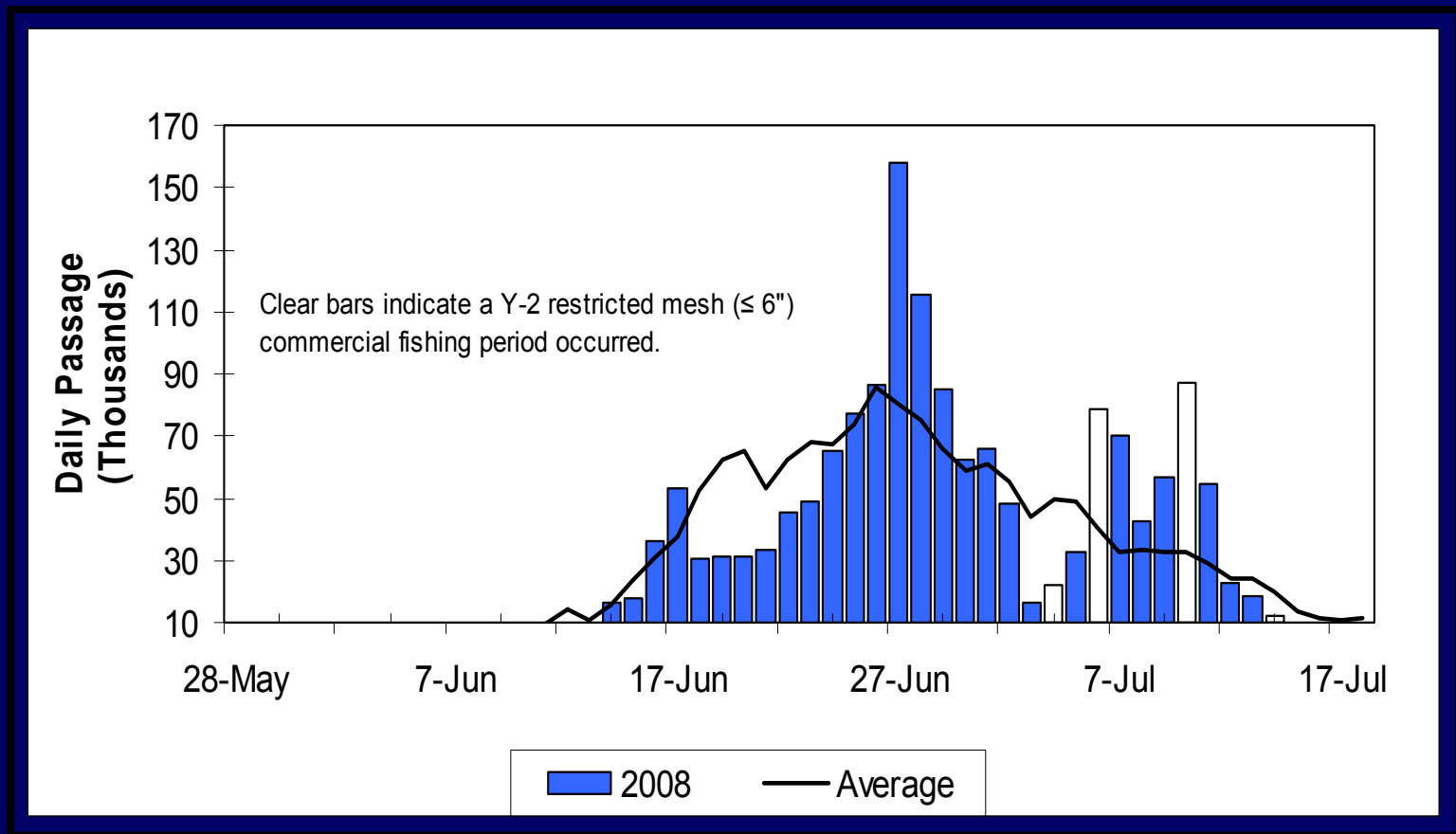
Summer Chum Preseason Outlook

Expected:

- Average run
- Escapements would be met
- Subsistence priority met
- 500,000-900,000 surplus

- Commercial harvest levels potentially affected by a poor Chinook run

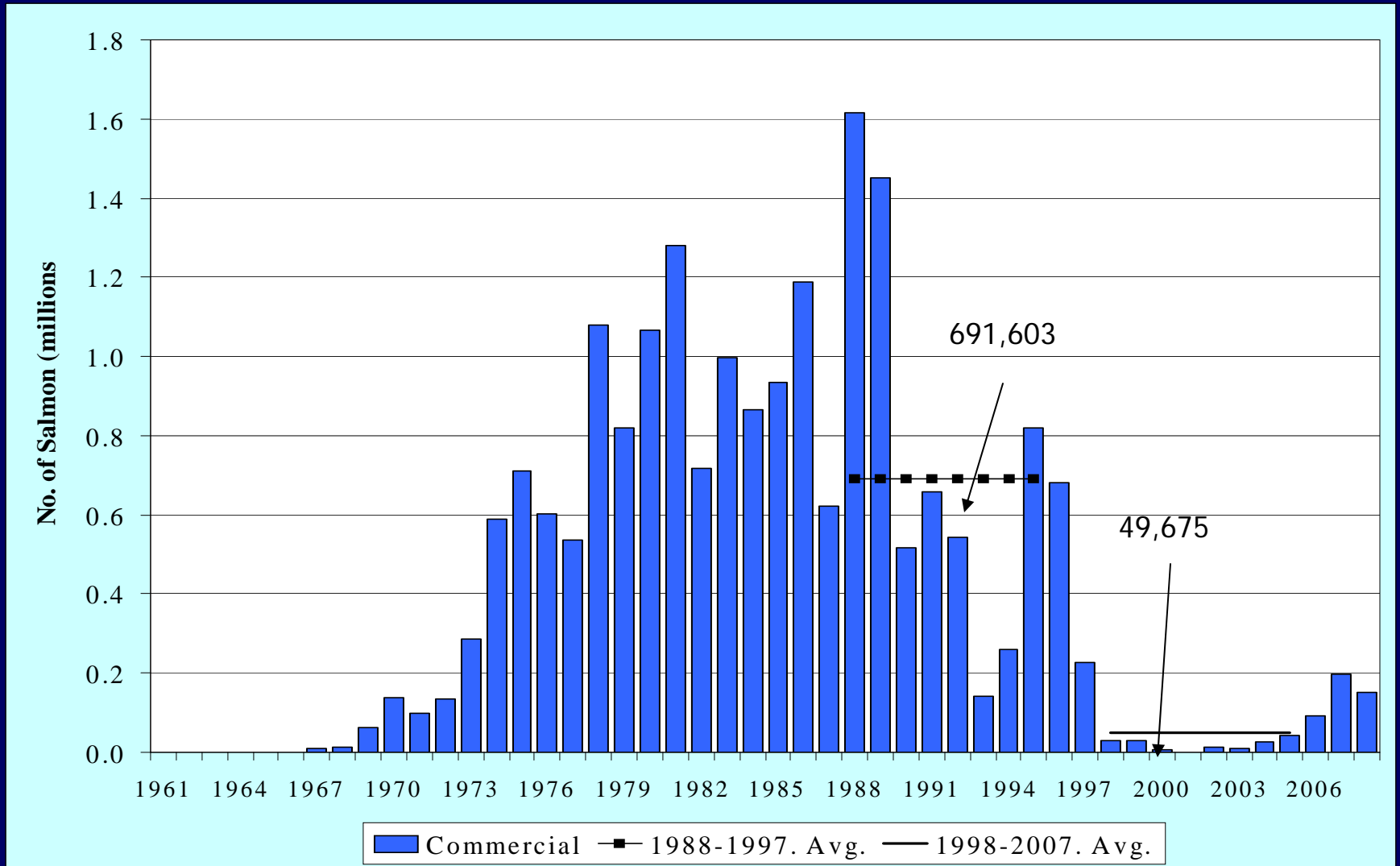
Y-2 Restricted Commercial Periods



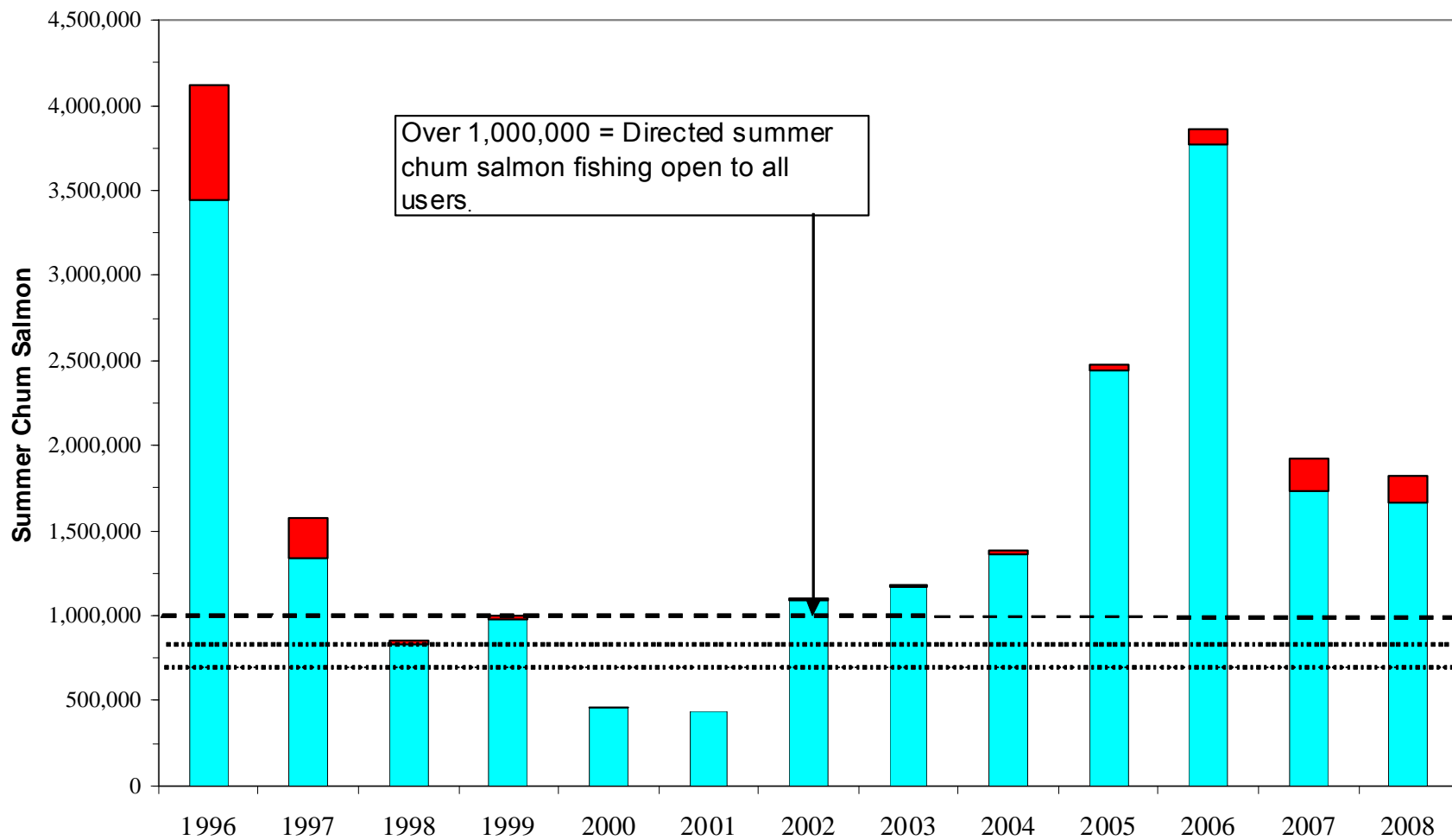
Summer Chum Harvest

- 151,786 - Commercial Harvest
 - Recent 10-year avg= 49,675
 - 206% above recent 10-year avg
- Subsistence Harvest- data pending
- Total US Harvest- data pending

Commercial Harvest Summer Chum



Pilot Station summer chum salmon passage estimates, 1995 - 2008^a



^a 1996 operated in training only mode.

Summer Chum Escapement Summary

- Total run estimate passed Pilot Station sonar was 1.7 Million
- Met drainage wide minimum escapement objective of 600,000 for the Yukon River based on Pilot station sonar
- Escapements were generally good in most lower river tributaries and the Koyukuk River drainage

What's Next?



2009 Chinook Salmon

- Preliminary analyses suggest the 2009 Yukon River Chinook salmon run will be below average
- Conservative management in 2009
- Seeking input regarding management strategies and options