



# **YUKON RIVER FISHERIES 2008 ALASKA FALL SALMON SEASON OVERVIEW**

---

**Yukon River Panel  
December 8 – 12, 2008  
Anchorage, Alaska**

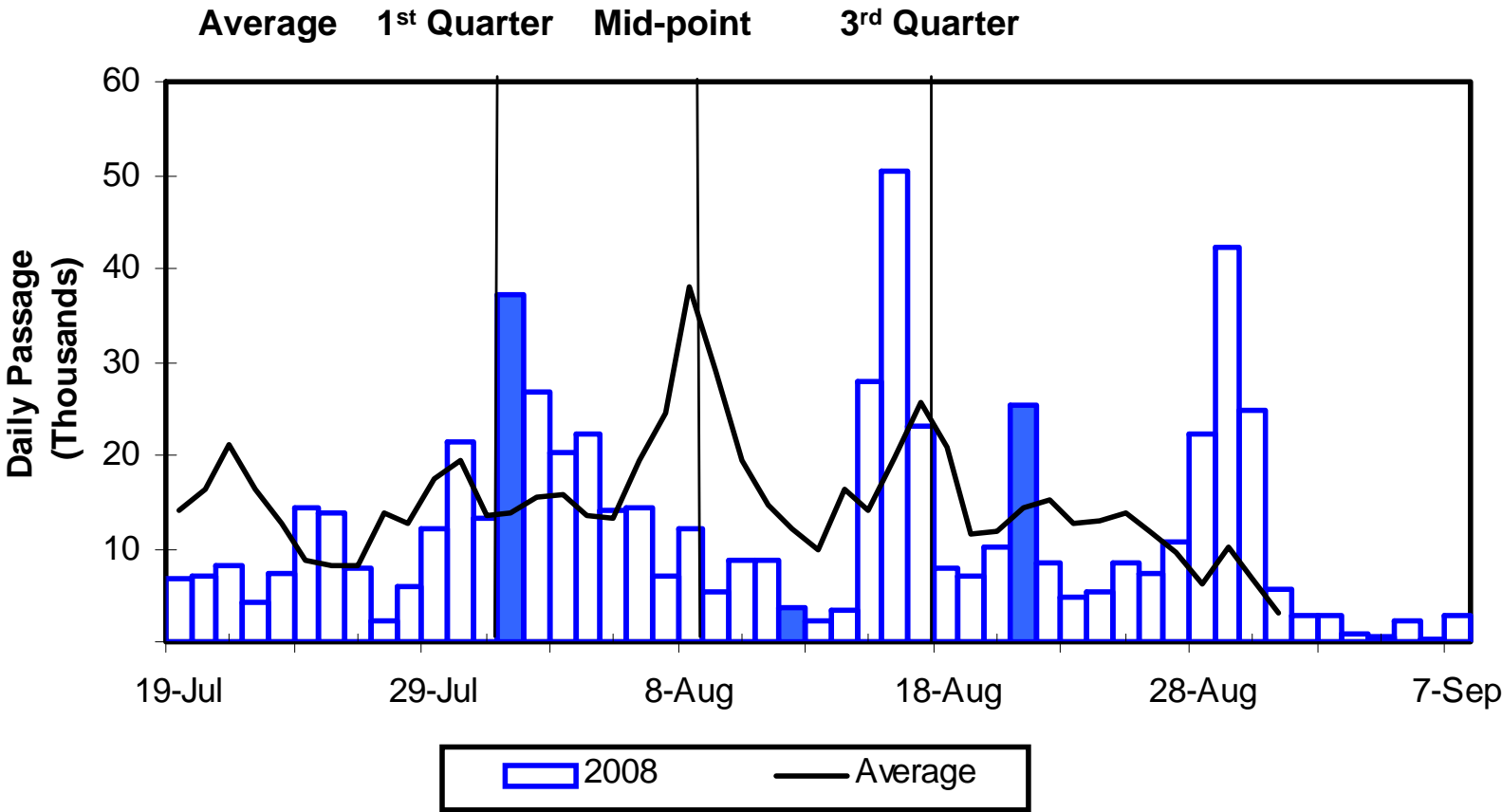
Presentation by Fred Bue  
Alaska Department of Fish and Game  
Commercial Fisheries Division

# Fall Chum Salmon Fishery Management

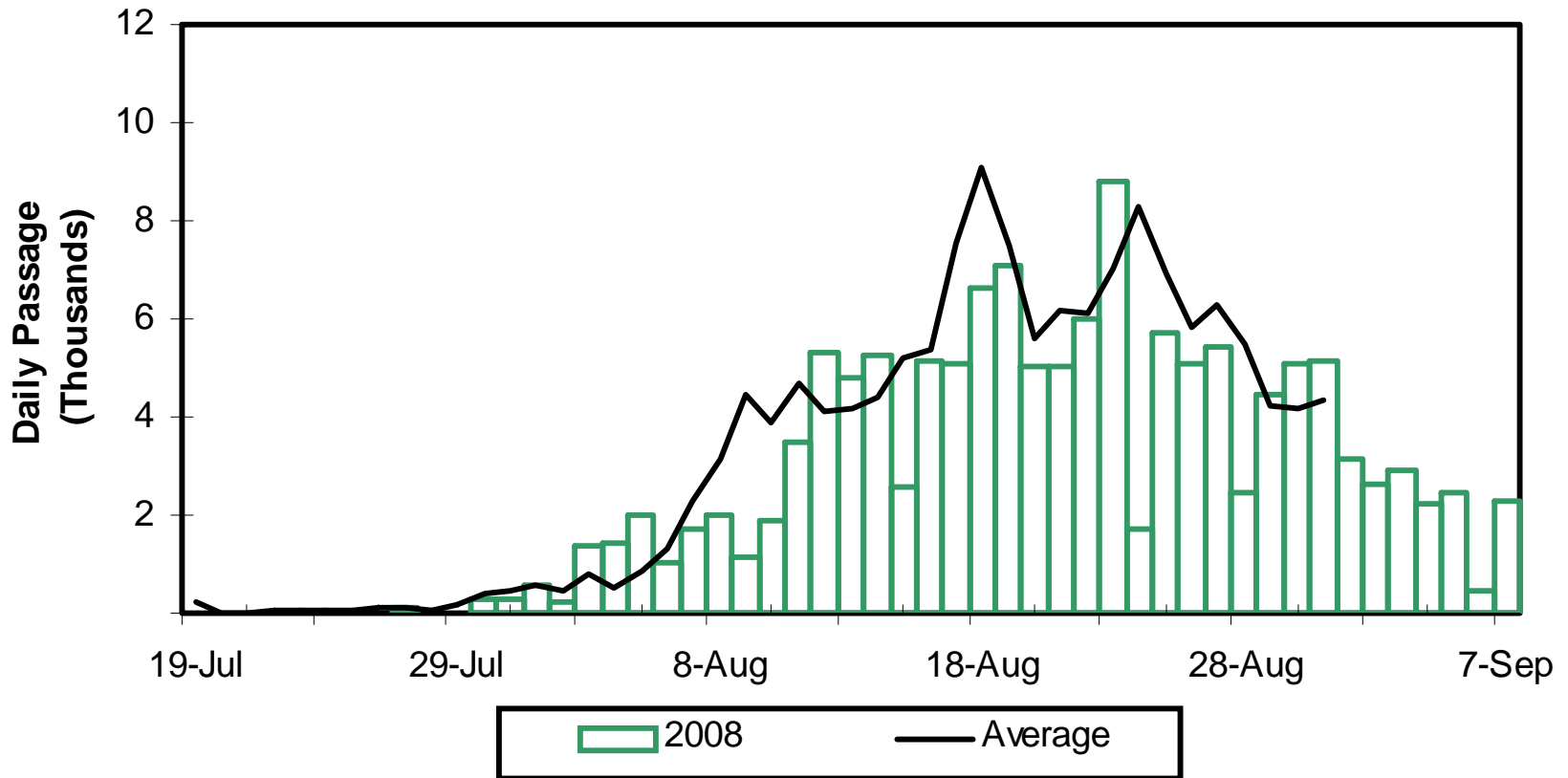
---

- ❑ Preseason run size was projected as a range of 900,000 to 1.2 million fall chum salmon.
- ❑ Expected normal U.S. subsistence fisheries.
- ❑ Commercial harvest was anticipated to be between 50,000 to 400,000 fish.
- ❑ Inseason projection based on summer/fall relationship suggested between 590,000 to 885,000 fish.
- ❑ Management actions were based on evaluation of inseason indicators of run strength.

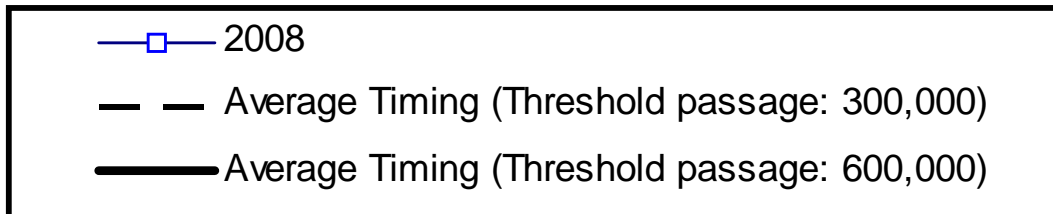
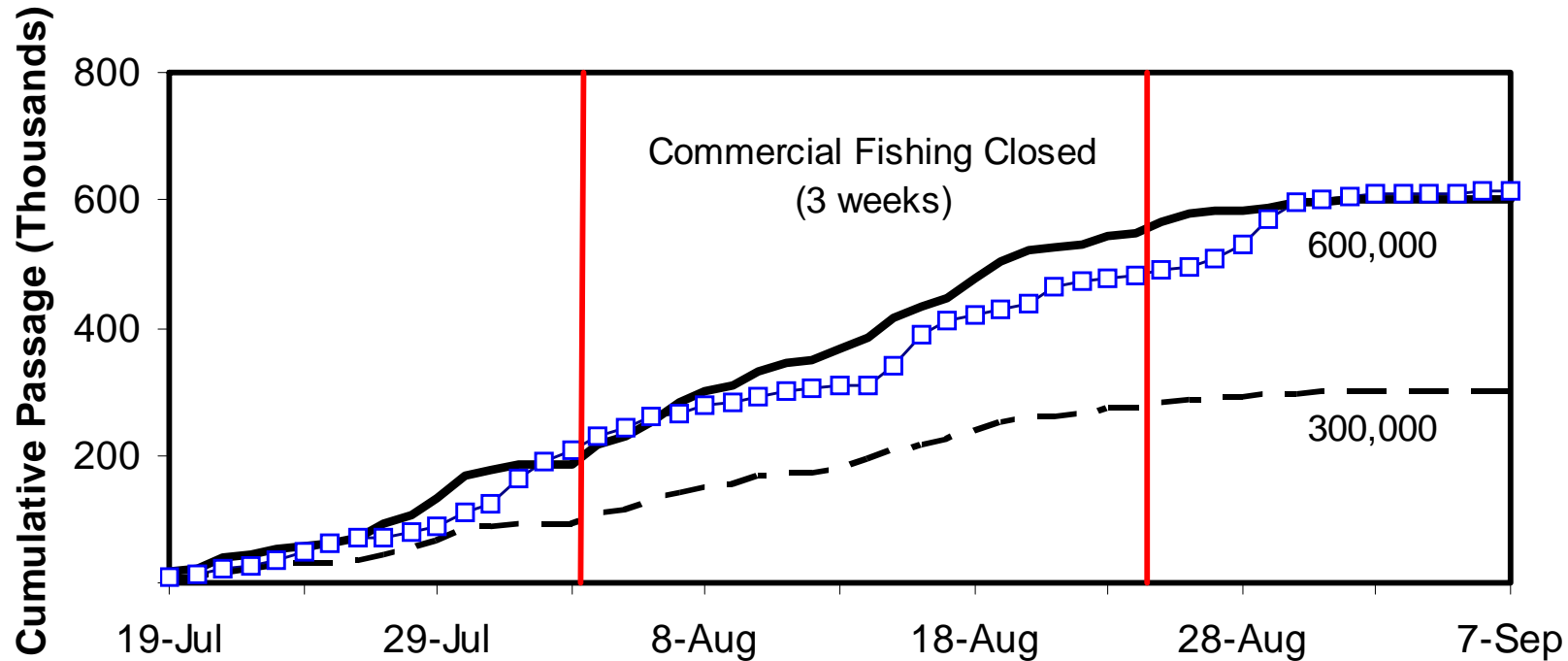
# Pilot Station Sonar Daily Fall Chum Salmon Passage



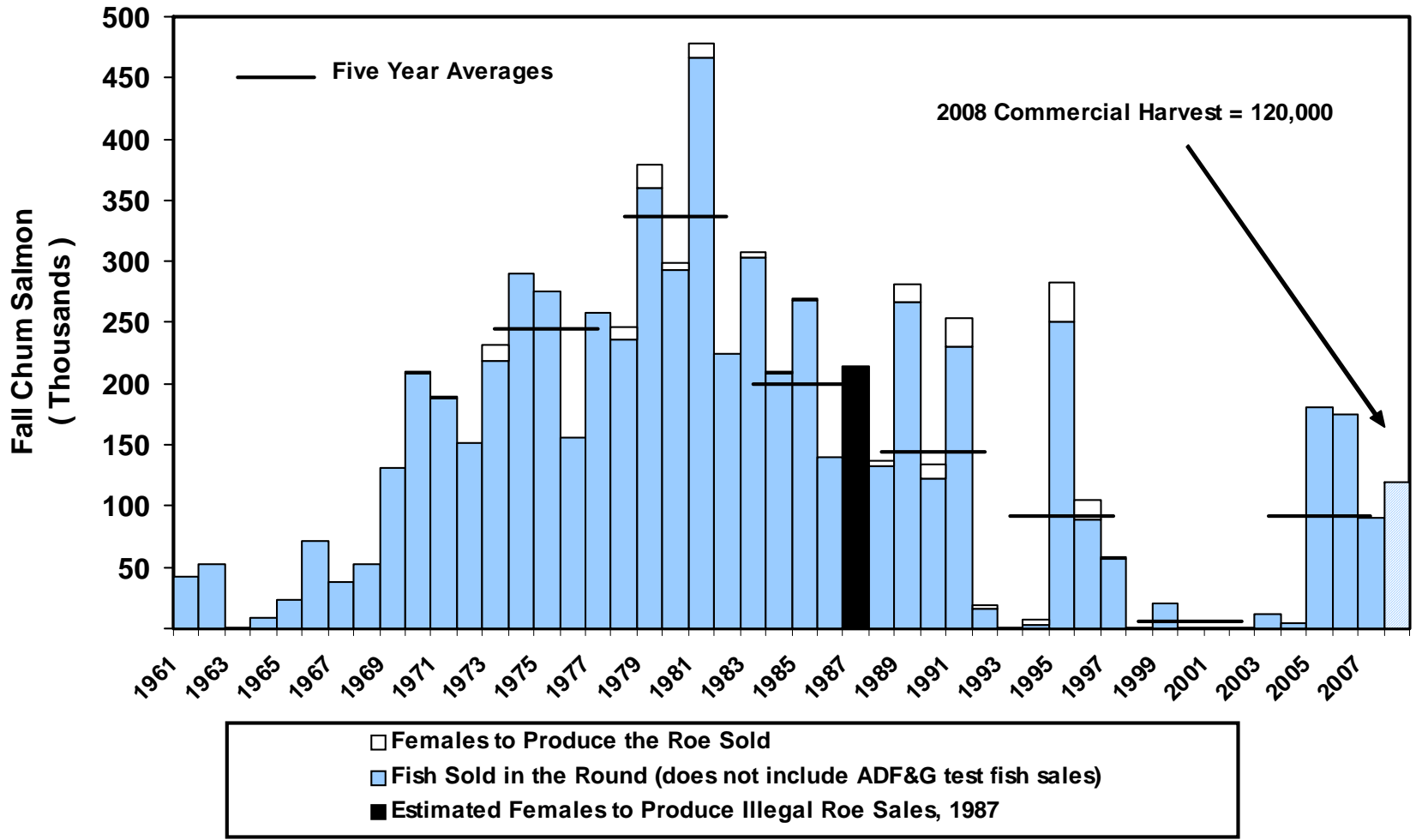
# Pilot Station Sonar Daily Coho Salmon Passage



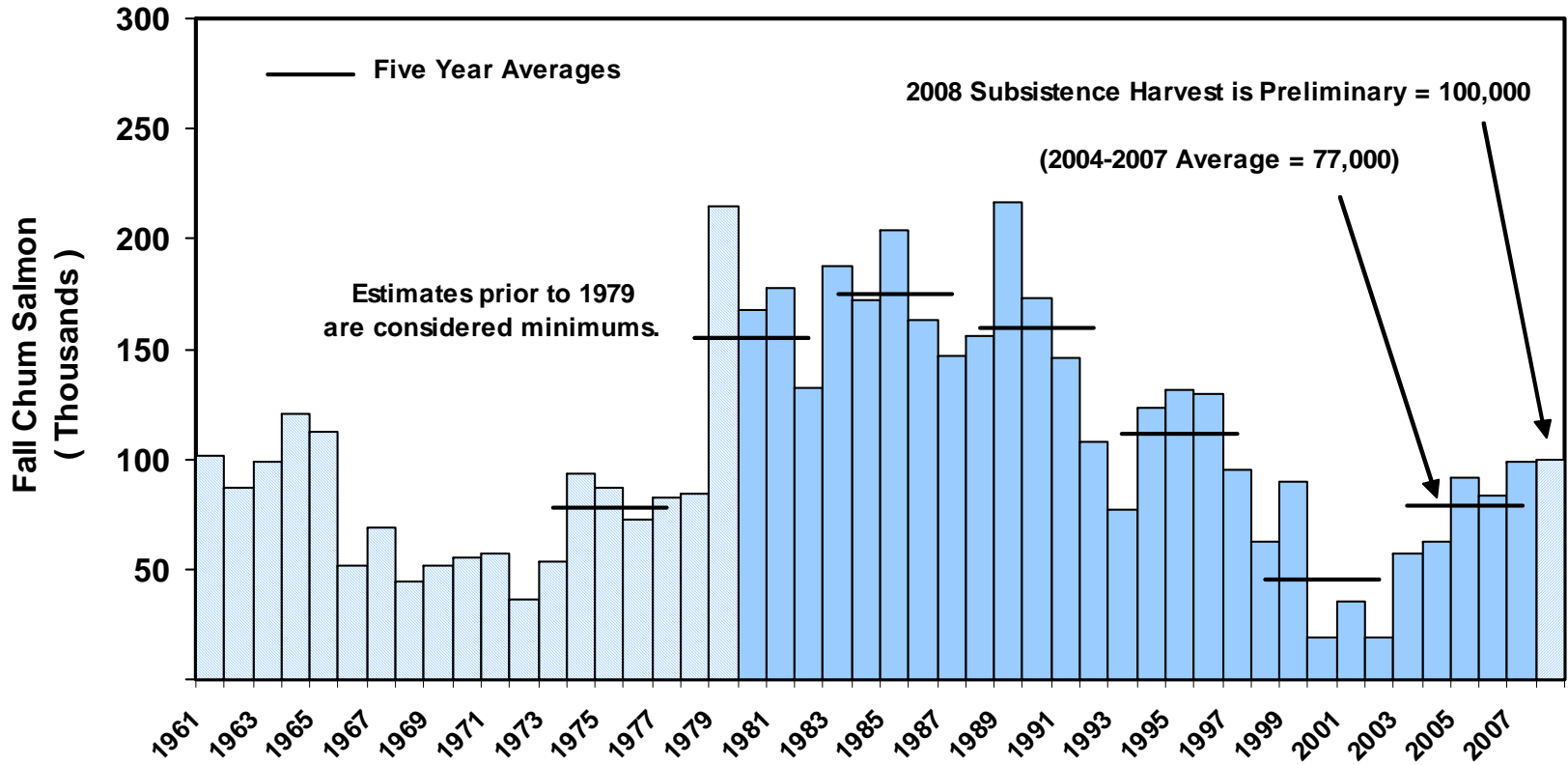
# Pilot Station Sonar Cumulative Fall Chum Salmon Passage



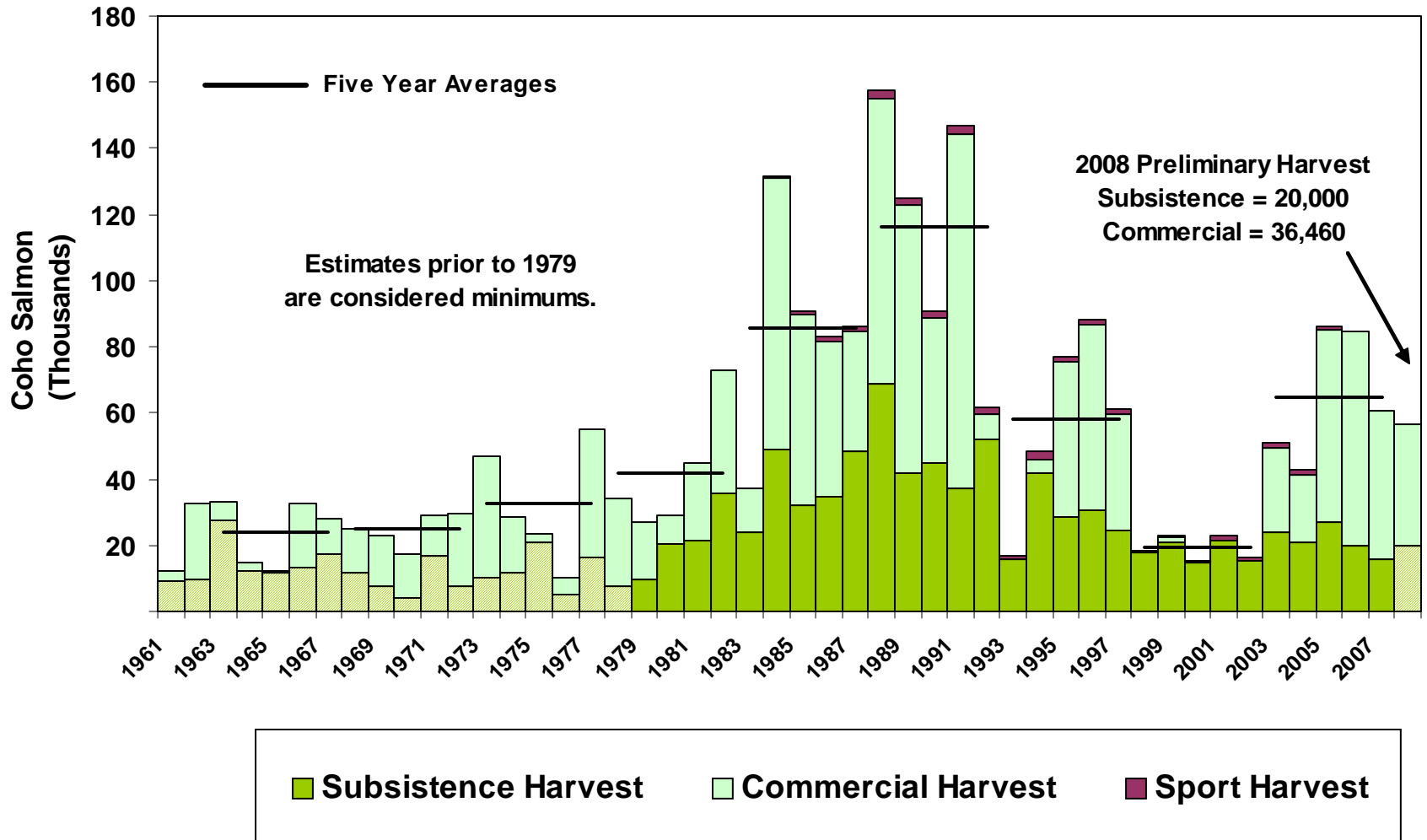
# Yukon River Fall Chum Salmon U.S. Commercial Harvest



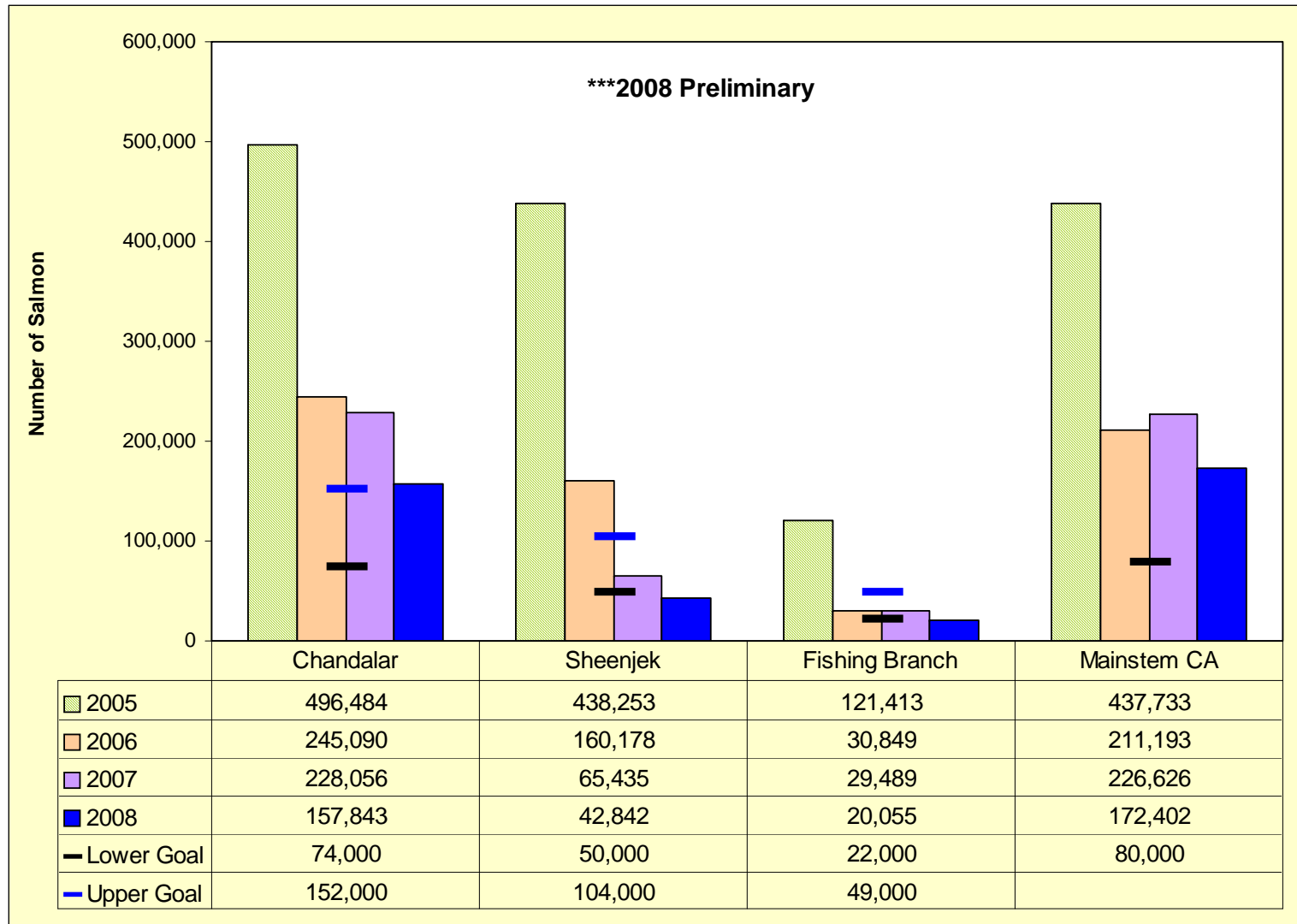
# Yukon River Fall Chum Salmon U.S. Subsistence Harvest



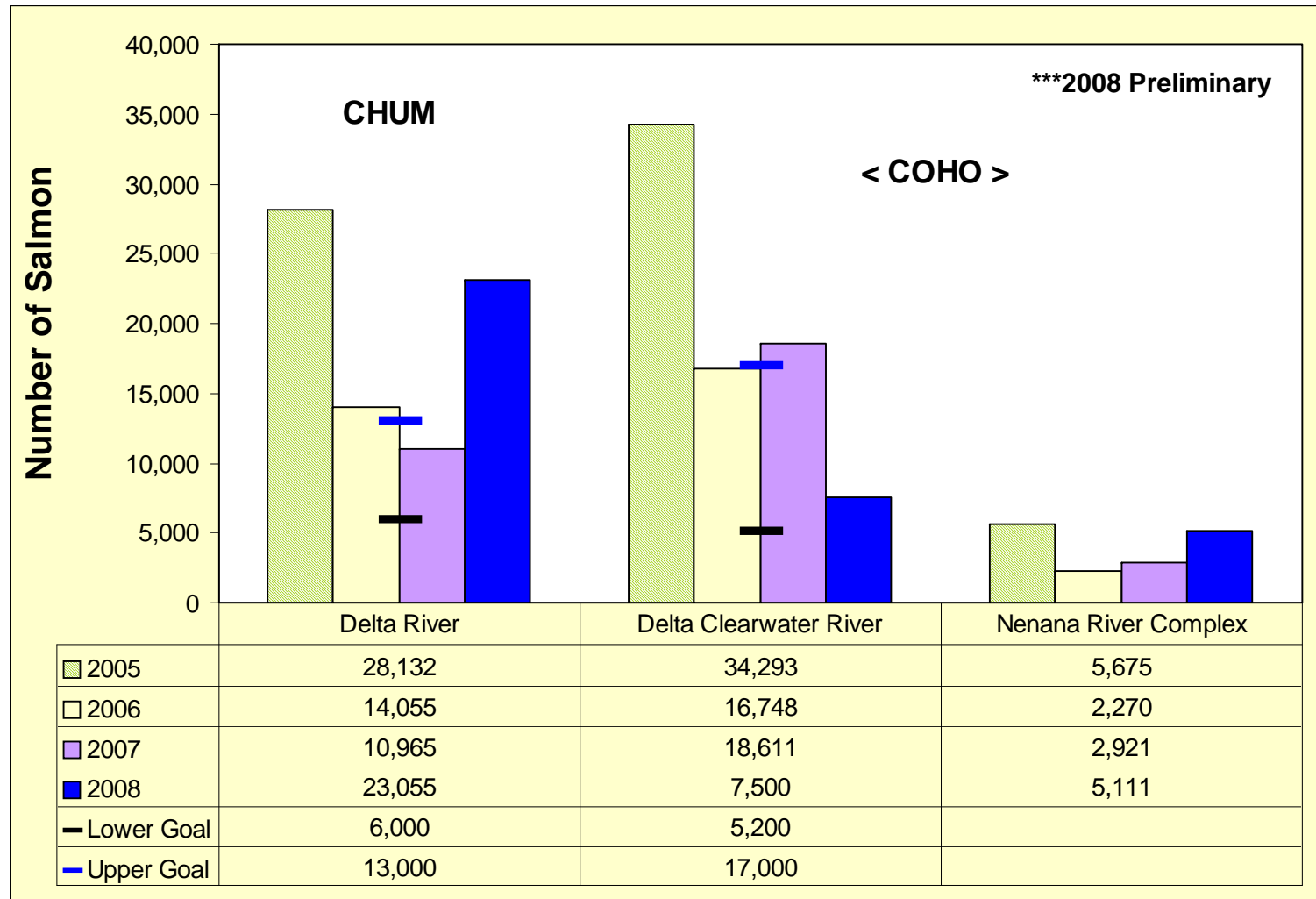
# Yukon River Coho Salmon U.S. Harvests



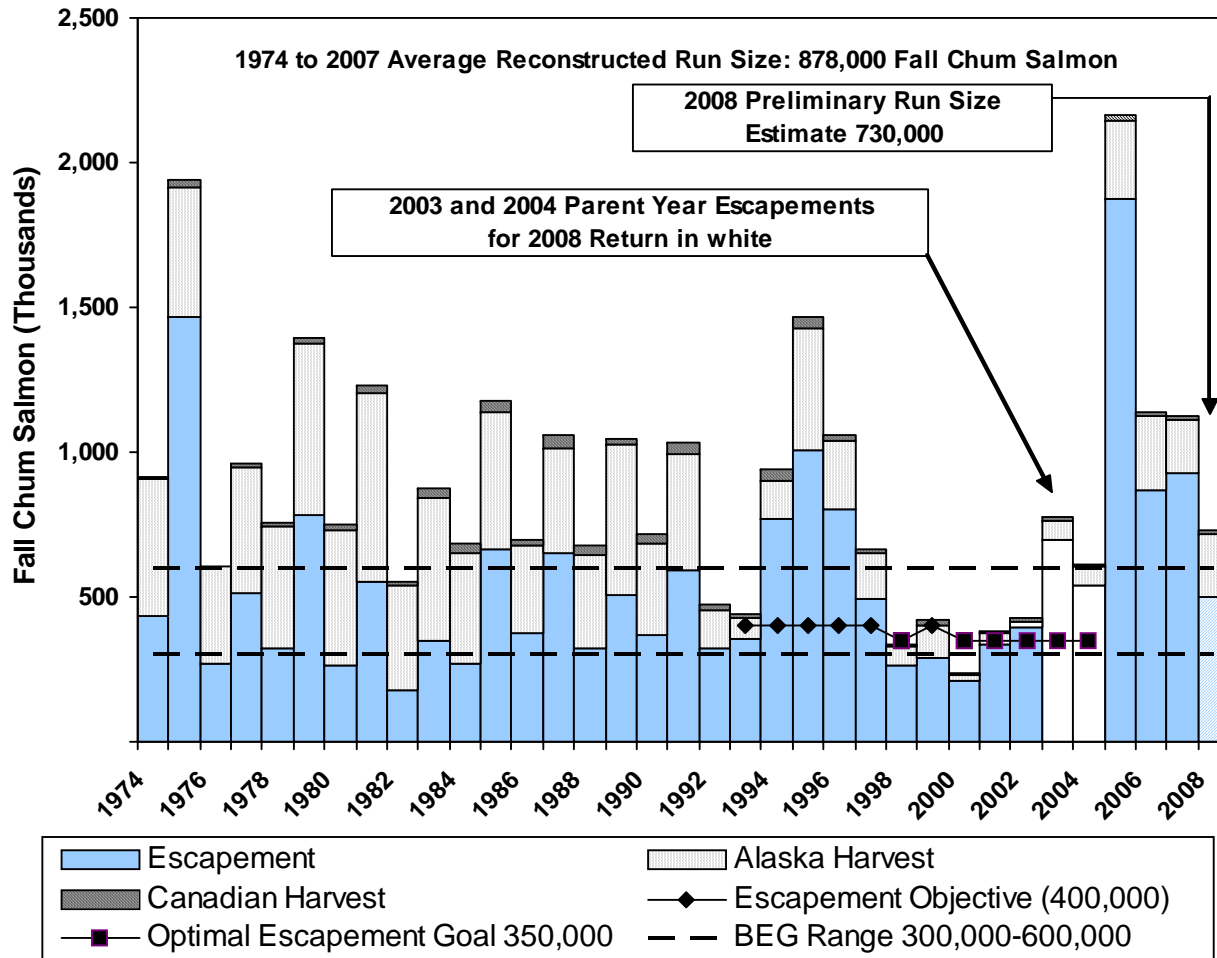
# Select 2008 Upper Yukon River Fall Chum Salmon Escapement Estimates



# Select 2008 Tanana River Fall Chum and Coho Salmon Escapement Estimates

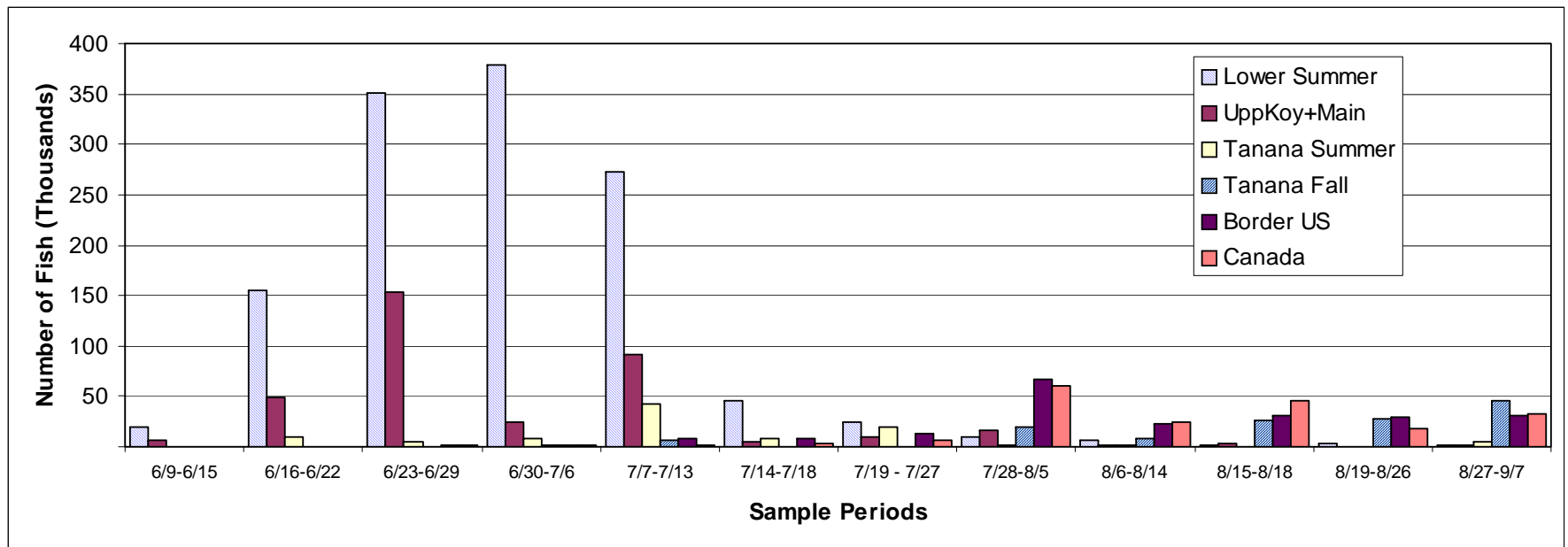


# Yukon River Fall Chum Salmon Reconstructed Total Run Size



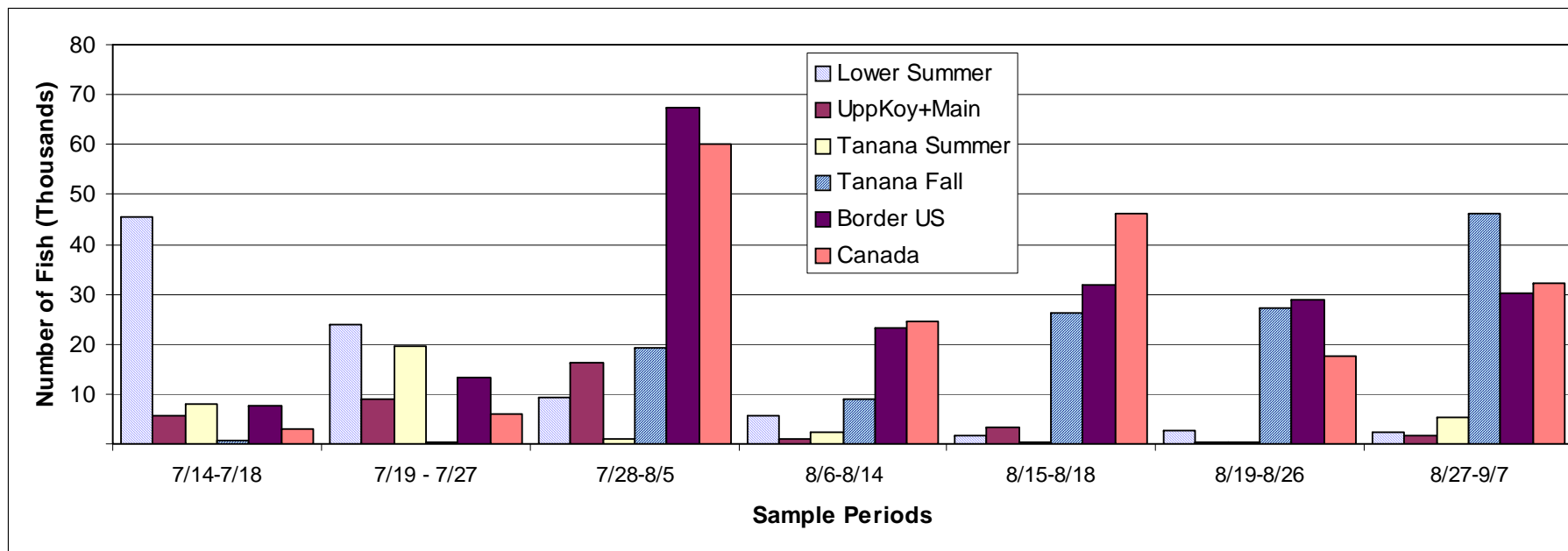
# Chum Salmon Genetics 2008

## Summer and Fall Stocks

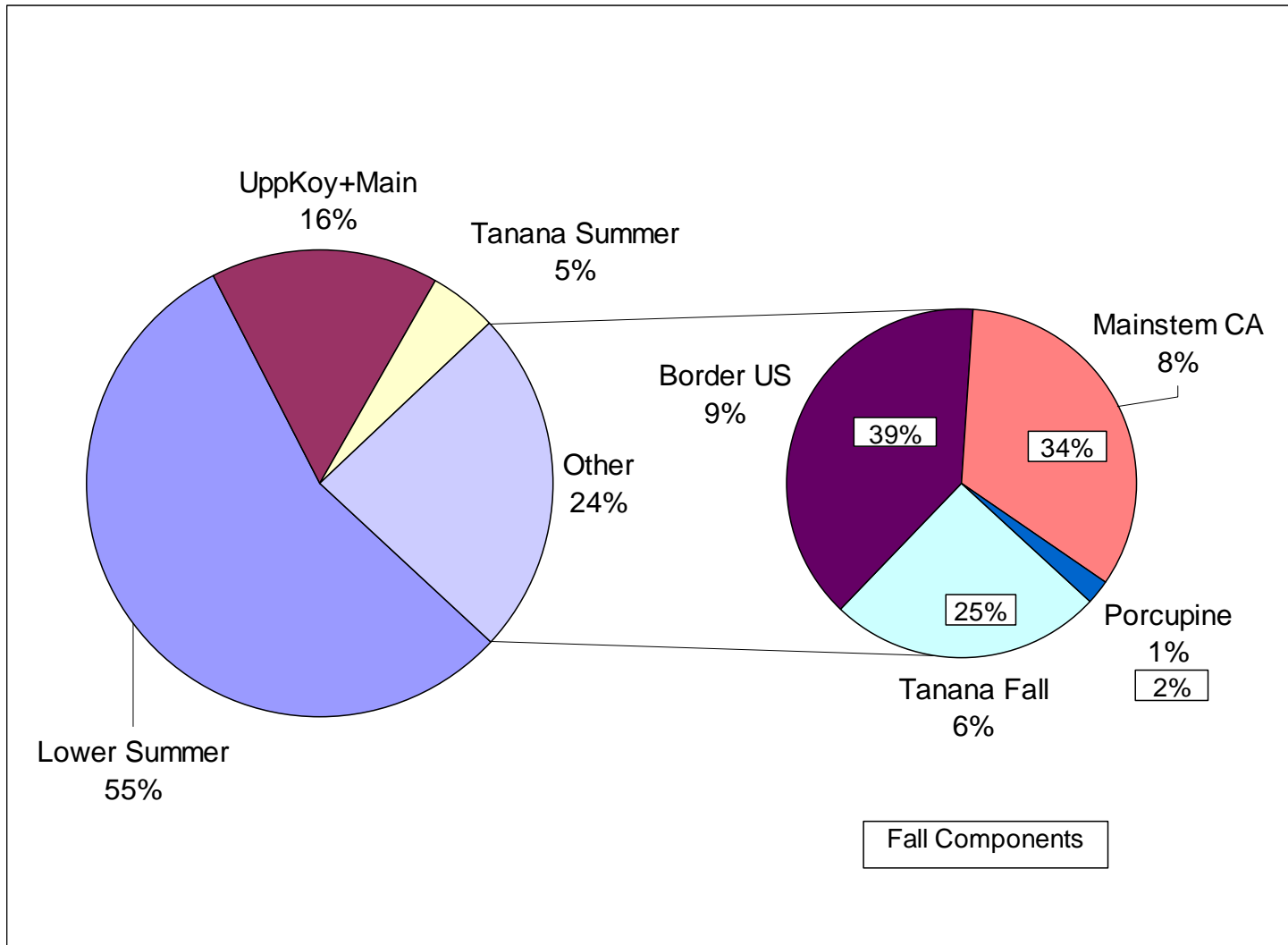


# Chum Salmon Genetics 2008

## Fall Stocks



# Chum Salmon Genetics 2008



# 2008 Fall Season Summary

---

---

## □ Fall Chum Salmon

- Late run with near average production levels.
- Subsistence harvest similar to previous 3 years.
- Commercial harvest above recent 5-year average.
- Yukon River fall chum salmon drainage-wide escapement goal was achieved.
- Most individual escapement goals were met.
  - Exception of Sheenjek and Fishing Branch Rivers.

## □ Coho Salmon

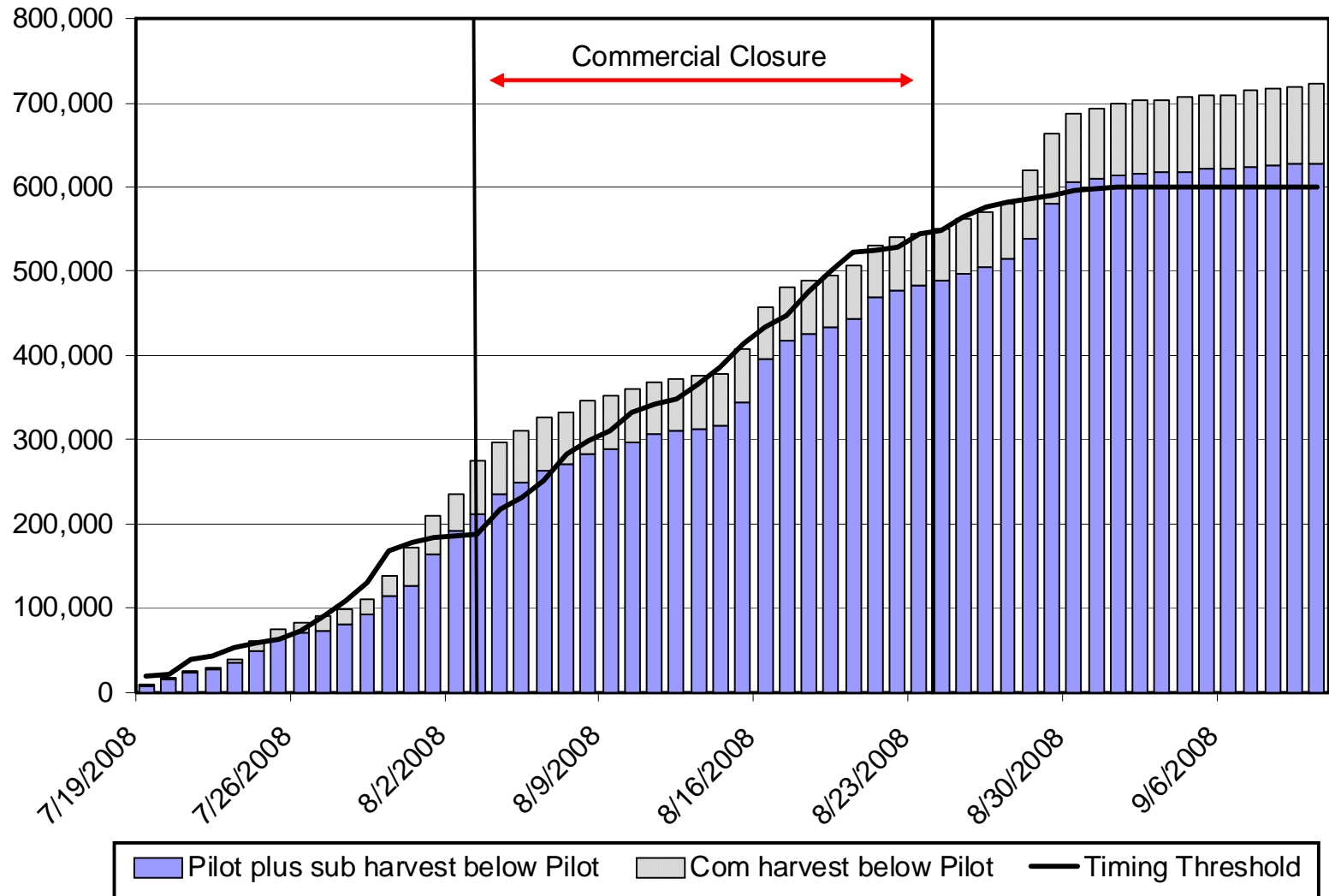
- Average timing with near average run size.
- Subsistence harvest adequate.
- Commercial harvest below recent 5-year average.
- Escapement appears to be adequate.



Emmonak Fall Drift Test Fishery

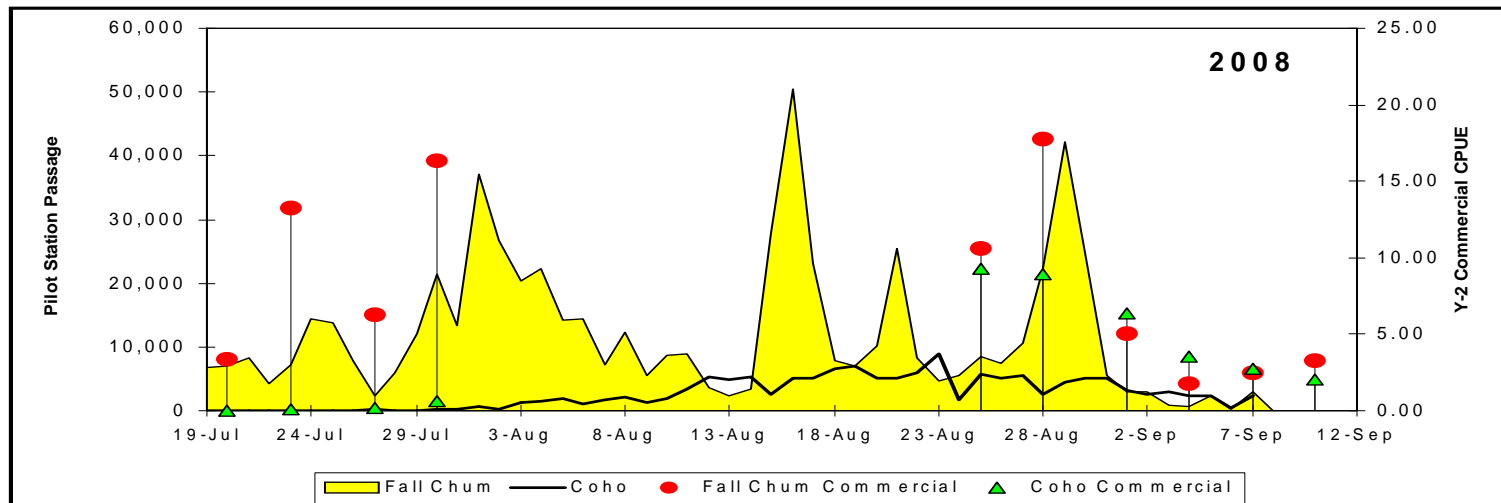
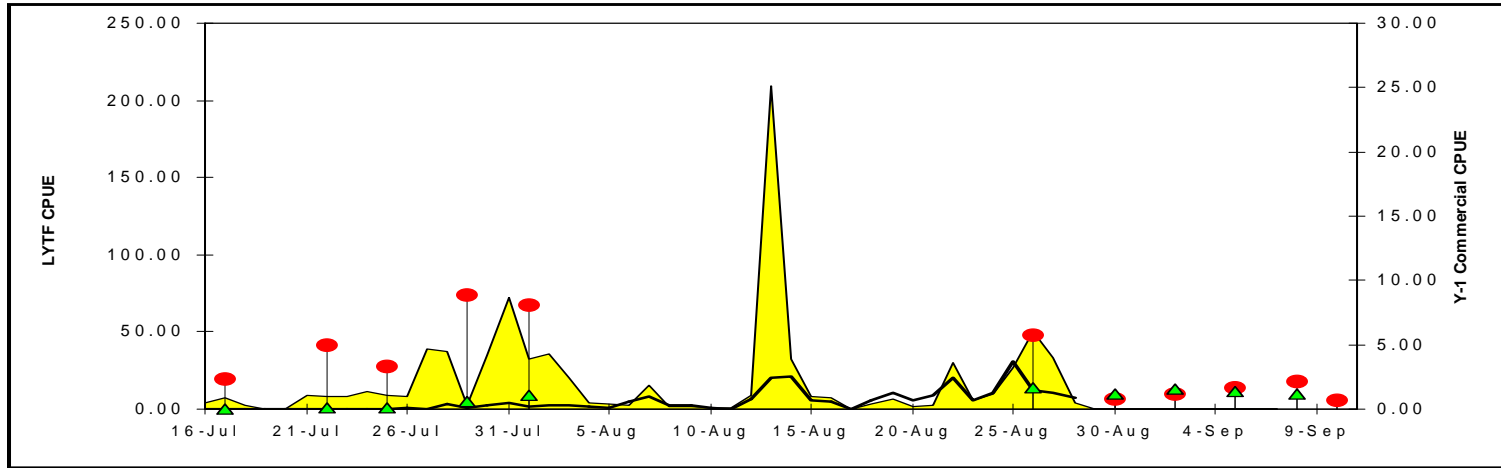
Photo by: ADF&G Staff

# 2008 Lower Yukon Harvest Timing

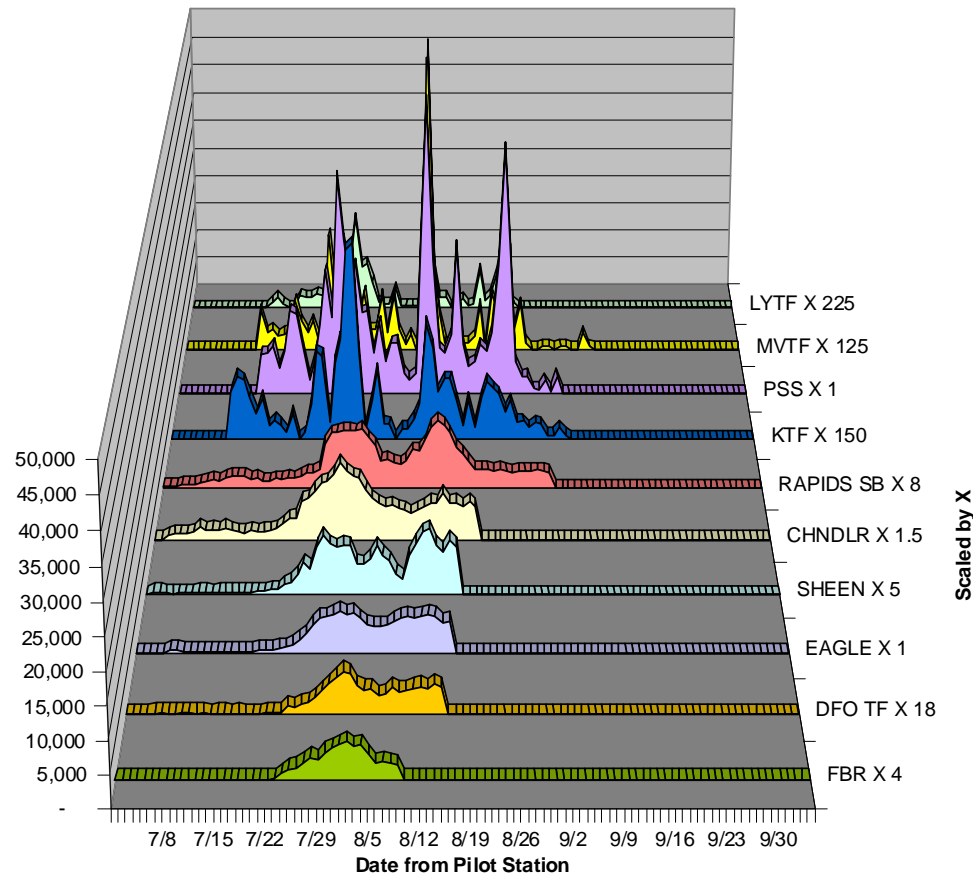


\*Y-1 commercial lagged 2 days for timing.

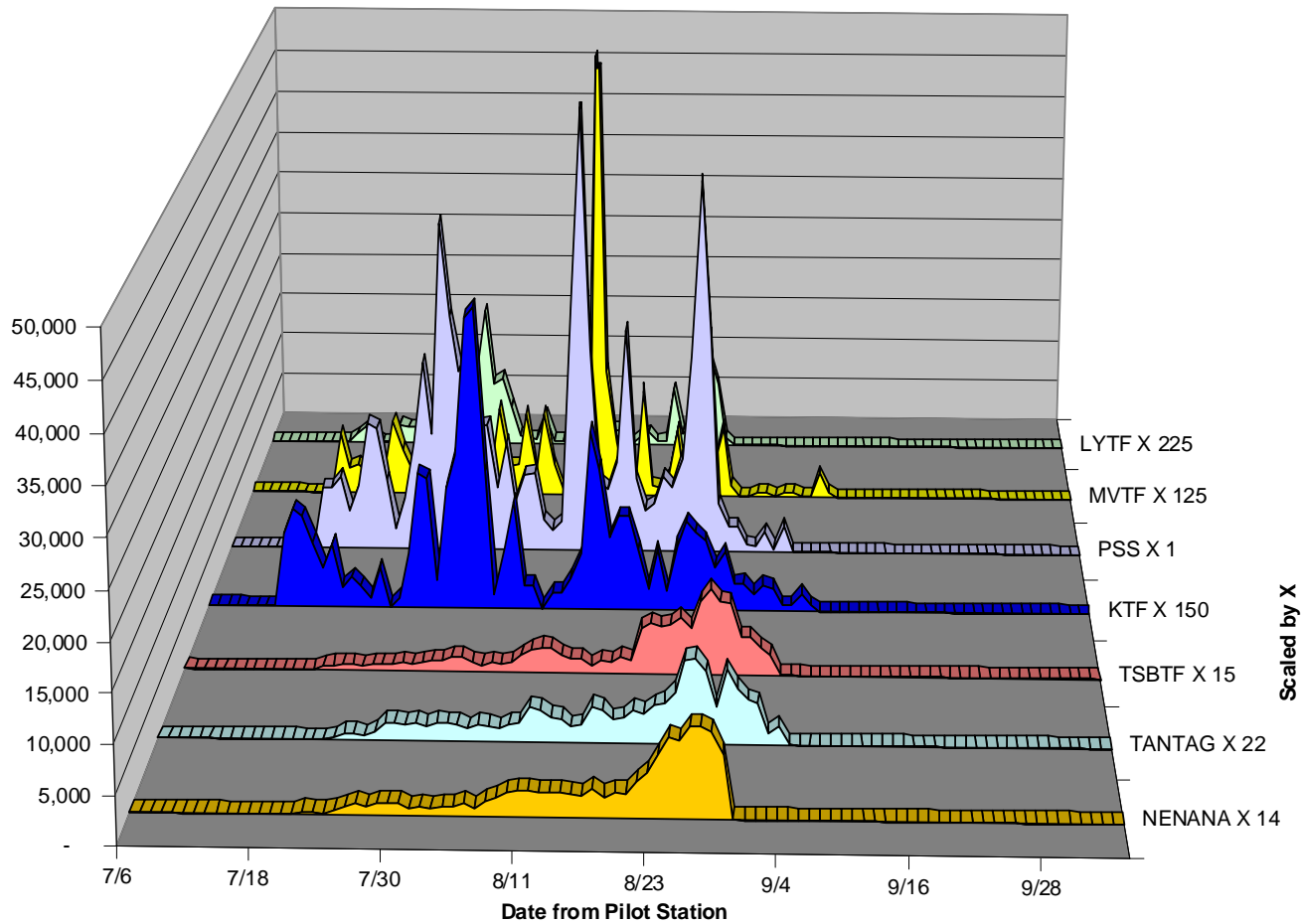
# Assessment Projects and Commercial CPUE



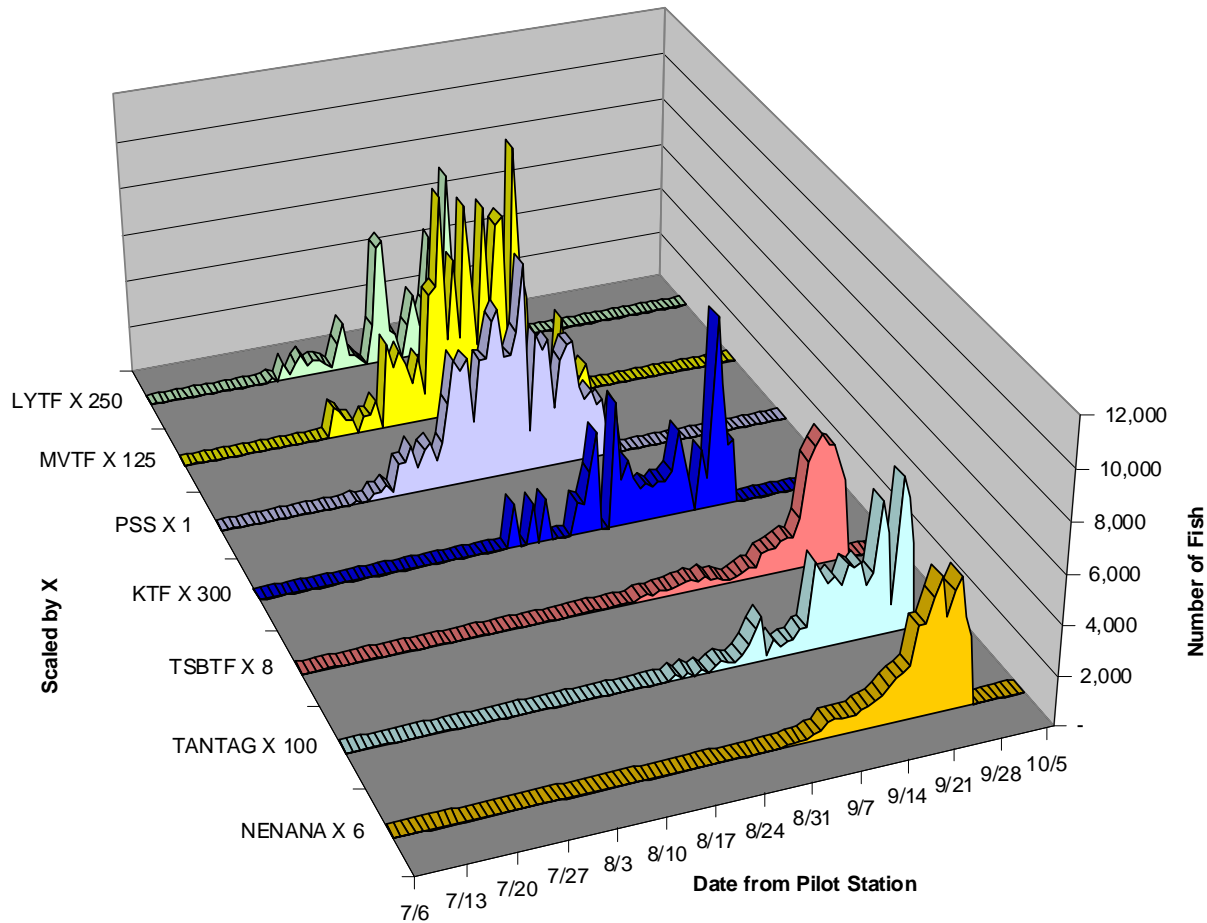
# 2008 Fall Chum Salmon Timing Upper Yukon River Stocks



# 2008 Fall Chum Salmon Timing Tanana River Stocks



# 2008 Coho Salmon Timing Tanana River Stocks



# Comparisons of Stock Timing

